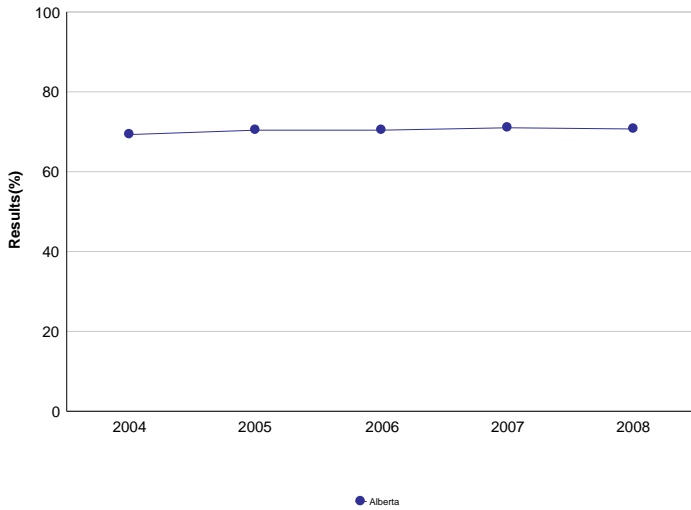


High School Completion Rates - Measure History

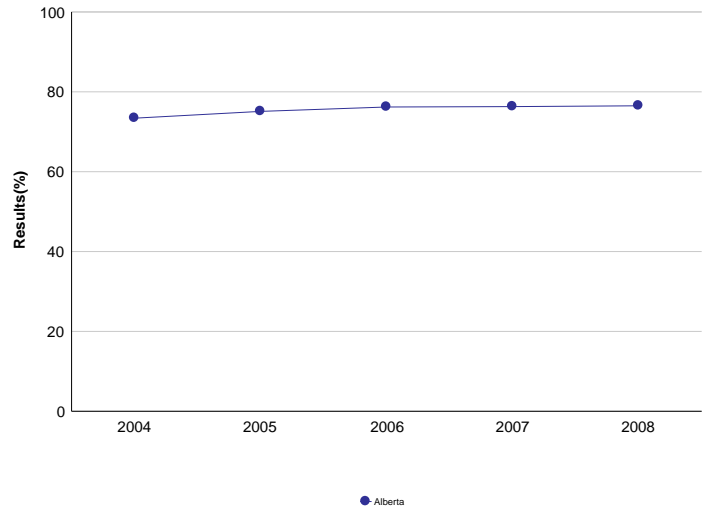
Province: Alberta

	Alberta									
	2004		2005		2006		2007		2008	
	N	%	N	%	N	%	N	%	N	%
3 Year Completion	43,222	69.3	43,032	70.4	43,930	70.4	44,661	71.0	45,432	70.7
4 Year Completion	43,346	73.4	43,192	75.1	43,013	76.2	43,913	76.3	44,644	76.5
5 Year Completion	42,636	75.5	43,318	77.4	43,174	78.6	42,987	79.5	43,899	79.2

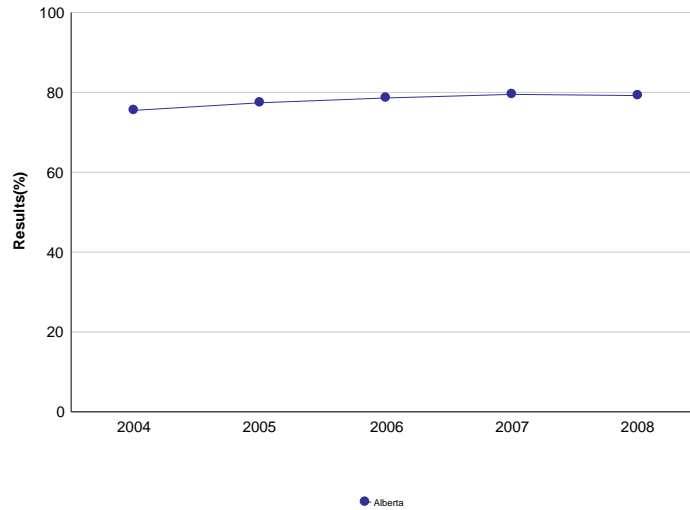
3 Year Completion (%)



4 Year Completion (%)



5 Year Completion (%)



Note: Data values have been suppressed where the number of students is less than 6. Suppression is marked with an asterisk (*).

Student Learning Opportunities

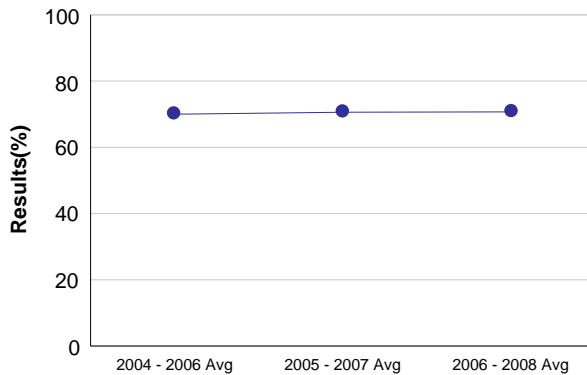


High School Completion Rates - 3 Year Rolling Average

Province: Alberta

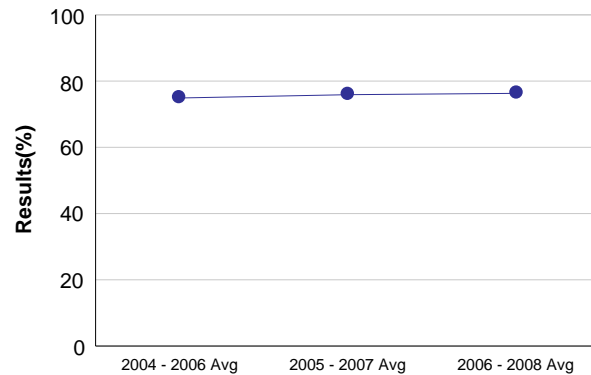
	Alberta					
	2004 - 2006 Avg		2005 - 2007 Avg		2006 - 2008 Avg	
	N	%	N	%	N	%
3 Year Completion	43,395	70.0	43,874	70.6	44,674	70.7
4 Year Completion	43,184	74.9	43,373	75.9	43,857	76.3
5 Year Completion	43,043	77.2	43,160	78.5	43,353	79.1

3 Year Completion (%)



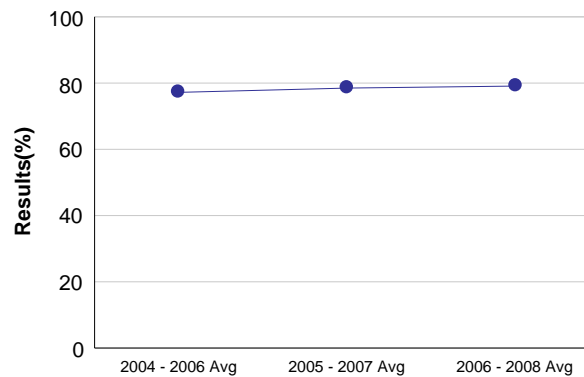
● Alberta

4 Year Completion (%)



● Alberta

5 Year Completion (%)



● Alberta

Note: Data values have been suppressed where the number of students is less than 6. Suppression is marked with an asterisk (*).

High School Completion Rates

Province: Alberta

Detail for 3 Year Rate (All Students)

	Total Students	Credentialed Completer			Non-Credentialed Completer			Total completers	Continuers	Leavers	Unadjusted Completion Rates	Estimated Attrition Factor	Completion Rates
		High School Diploma	High School Equivalency Diploma	Certificate of Achievement	Post-secondary Attendance	Apprenticeship	Academic Standing						
2004	43,222	28,512	2	283	56	93	275	29,221	9,573	4,428	67.6	1,038.9	69.3
2005	43,032	28,667	5	297	182	87	318	29,556	9,150	4,326	68.7	1,029.7	70.4
2006	43,930	29,271	7	257	210	96	332	30,173	9,335	4,422	68.7	1,072.6	70.4
2007	44,661	30,007	6	249	242	78	340	30,922	8,962	4,777	69.2	1,116.5	71.0
2008	45,432	30,414	15	265	216	35	349	31,294	9,086	5,052	68.9	1,147.0	70.7

Detail for 3 Year Rate (Mover/Non-Mover)

		Total Students	Credentialed Completer			Non-Credentialed Completer			Total Completers	Continuers	Leavers
			High School Diploma	High School Equivalency Diploma	Certificate of Achievement	Post-secondary Attendance	Apprenticeship	Academic Standing			
2004	Mover	4,533	2,371	1	14	8	13	15	2,422	1,644	467
	Non-Mover	38,689	26,141	1	269	48	80	260	26,799	7,929	3,961
2005	Mover	4,642	2,491	2	7	37	8	32	2,577	1,618	447
	Non-Mover	38,390	26,176	3	290	145	79	286	26,979	7,532	3,879
2006	Mover	4,684	2,608	3	8	40	12	22	2,693	1,531	460
	Non-Mover	39,246	26,663	4	249	170	84	310	27,480	7,804	3,962
2007	Mover	4,824	2,739	3	17	43	10	29	2,841	1,493	490
	Non-Mover	39,837	27,268	3	232	199	68	311	28,081	7,469	4,287
2008	Mover	5,050	2,785	9	11	42	3	43	2,893	1,637	520
	Non-Mover	40,382	27,629	6	254	174	32	306	28,401	7,449	4,532

Note: Data values have been suppressed where the number of students is less than 6. Suppression is marked with an asterisk (*).

Completion Rate is adjusted for estimated attrition factor.

High School Completion Rates

Province: Alberta

Detail for 4 Year Rate (All Students)

	Total Students	Credentialed Completer			Non-Credentialed Completer			Total completers	Continuers	Leavers	Unadjusted Completion Rates	Estimated Attrition Factor	Completion Rates
		High School Diploma	High School Equivalency Diploma	Certificate of Achievement	Post-secondary Attendance	Apprenticeship	Academic Standing						
2004	43,346	29,860	40	279	459	249	168	31,055	3,441	8,850	71.6	1,010.1	73.4
2005	43,192	30,273	32	279	702	255	148	31,689	3,178	8,325	73.4	1,000.5	75.1
2006	43,013	30,495	45	300	749	256	159	32,004	2,845	8,164	74.4	1,030.2	76.2
2007	43,913	31,126	55	247	839	264	146	32,677	2,799	8,437	74.4	1,098.7	76.3
2008	44,644	31,810	37	277	873	121	157	33,275	2,704	8,665	74.5	1,140.0	76.5

Detail for 4 Year Rate (Mover/Non-Mover)

		Total Students	Credentialed Completer			Non-Credentialed Completer			Total Completers	Continuers	Leavers
			High School Diploma	High School Equivalency Diploma	Certificate of Achievement	Post-secondary Attendance	Apprenticeship	Academic Standing			
2004	Mover	5,390	2,956	17	9	61	35	21	3,099	1,156	1,135
	Non-Mover	37,956	26,904	23	270	398	214	147	27,956	2,285	7,715
2005	Mover	5,287	2,874	15	20	138	43	14	3,104	1,062	1,121
	Non-Mover	37,905	27,399	17	259	564	212	134	28,585	2,116	7,204
2006	Mover	5,348	3,010	18	10	167	33	30	3,268	977	1,103
	Non-Mover	37,665	27,485	27	290	582	223	129	28,736	1,868	7,061
2007	Mover	5,497	3,164	27	13	164	36	18	3,422	953	1,122
	Non-Mover	38,416	27,962	28	234	675	228	128	29,255	1,846	7,315
2008	Mover	5,542	3,255	18	19	160	11	22	3,485	902	1,155
	Non-Mover	39,102	28,555	19	258	713	110	135	29,790	1,802	7,510

Note: Data values have been suppressed where the number of students is less than 6. Suppression is marked with an asterisk (*).

Completion Rate is adjusted for estimated attrition factor.

Student Learning Opportunities



High School Completion Rates

Province: Alberta

Detail for 5 Year Rate (All Students)

	Total Students	Credentialed Completer			Non-Credentialed Completer			Total completers	Continuers	Leavers	Unadjusted Completion Rates	Estimated Attrition Factor	Completion Rates
		High School Diploma	High School Equivalency Diploma	Certificate of Achievement	Post-secondary Attendance	Apprenticeship	Academic Standing						
2004	42,636	29,388	139	233	1,099	476	106	31,441	1,394	9,801	73.7	979.8	75.5
2005	43,318	30,645	120	275	1,207	392	104	32,743	1,296	9,279	75.6	988.8	77.4
2006	43,174	30,979	91	276	1,294	442	86	33,168	1,137	8,869	76.8	992.8	78.6
2007	42,987	31,171	105	304	1,245	395	109	33,329	997	8,661	77.5	1,053.7	79.5
2008	43,899	31,761	116	249	1,345	312	92	33,875	1,049	8,975	77.2	1,113.5	79.2

Detail for 5 Year Rate (Mover/Non-Mover)

		Total Students	Credentialed Completer			Non-Credentialed Completer			Total Completers	Continuers	Leavers
			High School Diploma	High School Equivalency Diploma	Certificate of Achievement	Post-secondary Attendance	Apprenticeship	Academic Standing			
2004	Mover	5,578	2,902	79	10	190	79	25	3,285	644	1,649
	Non-Mover	37,058	26,486	60	223	909	397	81	28,156	750	8,152
2005	Mover	5,790	3,284	62	12	297	58	15	3,728	534	1,528
	Non-Mover	37,528	27,361	58	263	910	334	89	29,015	762	7,751
2006	Mover	5,581	3,124	46	20	320	62	11	3,583	500	1,498
	Non-Mover	37,593	27,855	45	256	974	380	75	29,585	637	7,371
2007	Mover	5,617	3,264	46	12	327	53	22	3,724	415	1,478
	Non-Mover	37,370	27,907	59	292	918	342	87	29,605	582	7,183
2008	Mover	5,777	3,408	58	15	318	45	16	3,860	411	1,506
	Non-Mover	38,122	28,353	58	234	1,027	267	76	30,015	638	7,469

Note: Data values have been suppressed where the number of students is less than 6. Suppression is marked with an asterisk (*).

Completion Rate is adjusted for estimated attrition factor.