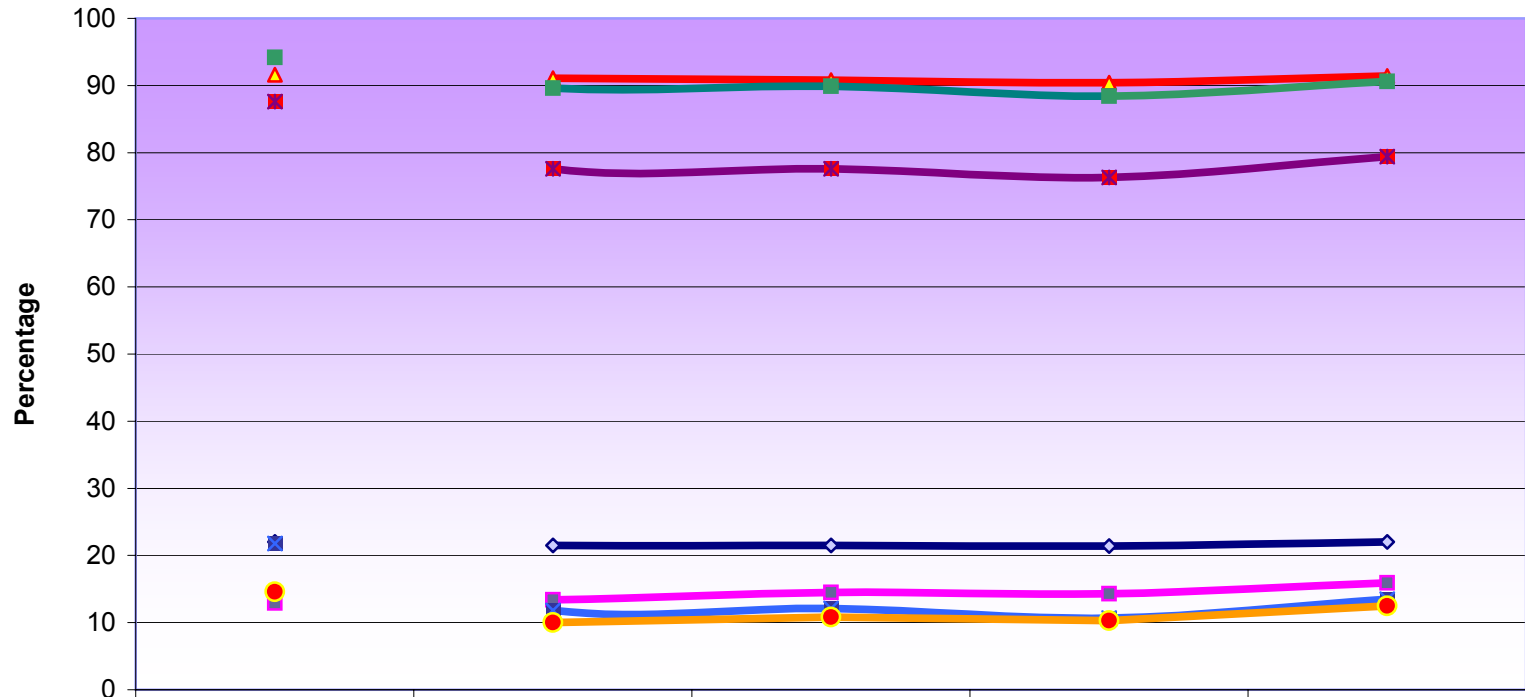


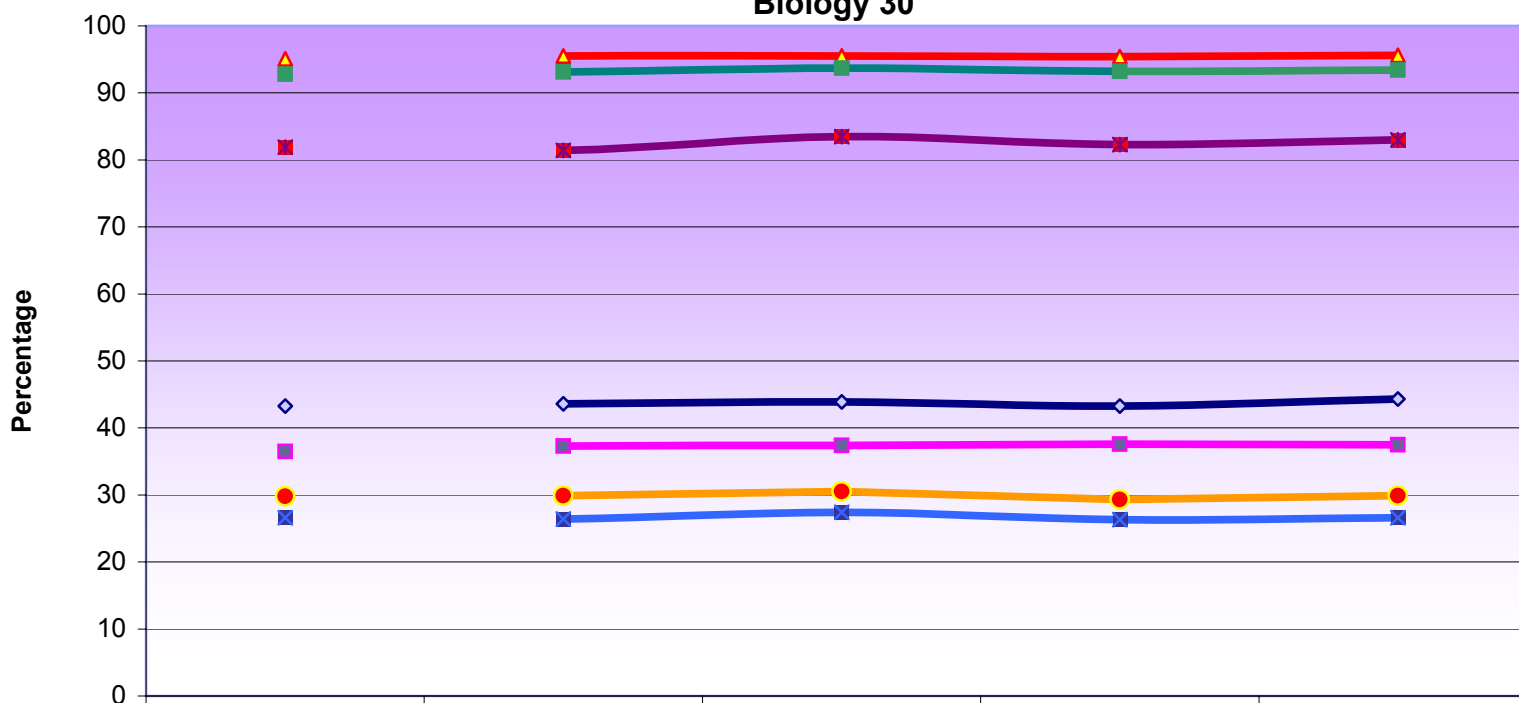
## Diploma Examination Results 2004/2005 to 2008/2009 Applied Mathematics 30



	2004-2005	2005-2006	2006/2007	2007/2008	2008/2009
Participation	22.0	21.5	21.5	21.4	22.0
School Excellence	12.9	13.4	14.5	14.3	15.9
School Acceptable	91.6	91.1	90.8	90.4	91.4
Diploma Excellence	21.8	11.8	12.1	10.7	13.5
Diploma Acceptable	87.6	77.6	77.6	76.3	79.4
Final Excellence	14.6	10.0	10.8	10.3	12.5
Final Acceptable	94.2	89.6	89.9	88.4	90.6

\* As test equating is being phased in, results for Applied Mathematics 30 are directly comparable starting from 2005/2006.

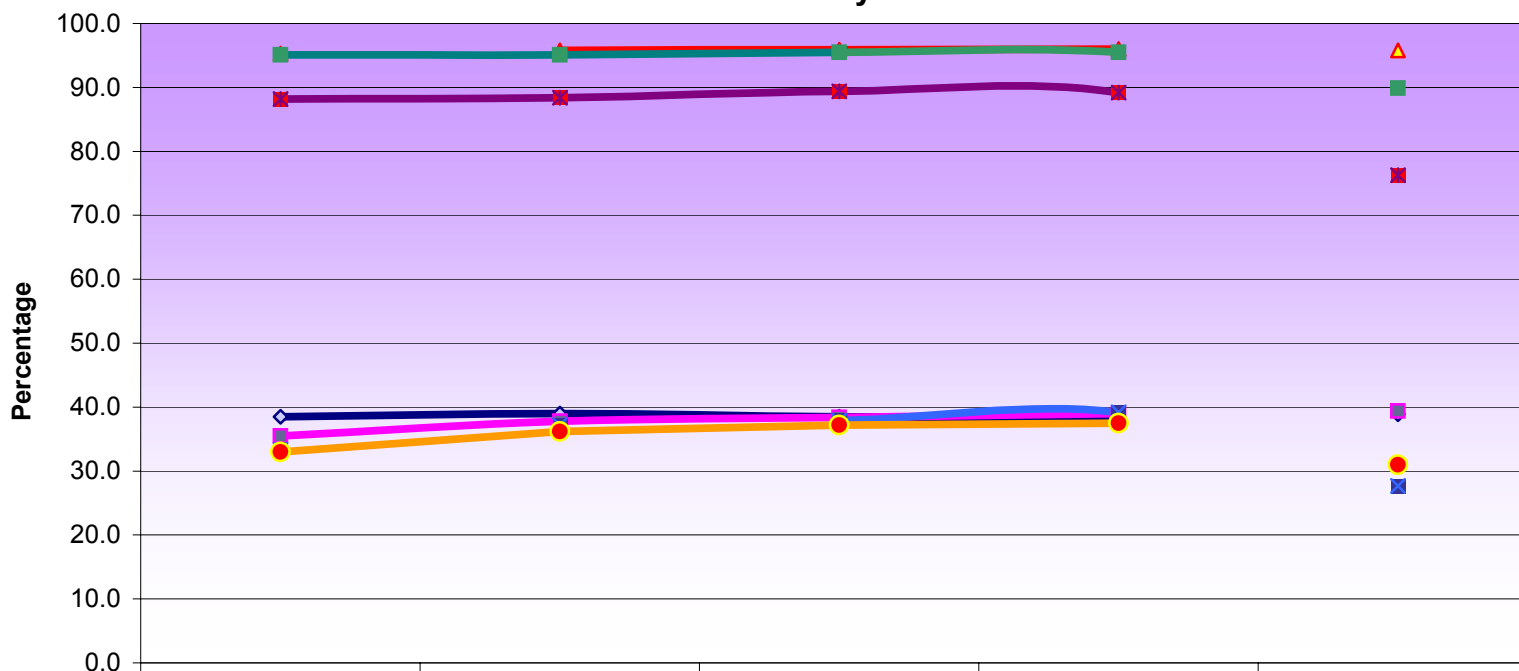
### Diploma Examination Results 2004/2005 to 2008/2009 Biology 30



	2004-2005	2005-2006	2006-2007	2007-2008	2008-2009
◆ Participation	43.3	43.6	43.9	43.3	44.3
■ School Excellence	36.5	37.3	37.4	37.6	37.5
▲ School Acceptable	95.1	95.5	95.5	95.4	95.6
■ Diploma Excellence	26.6	26.4	27.4	26.3	26.6
■ Diploma Acceptable	81.9	81.4	83.5	82.3	83.0
● Final Excellence	29.8	29.9	30.5	29.3	29.9
■ Final Acceptable	92.8	93.1	93.7	93.2	93.4

\* As test equating is being phased in, results for Biology 30 are directly comparable starting from 2005/2006.

### Diploma Examination Results 2004/2005 to 2008/2009 Chemistry 30

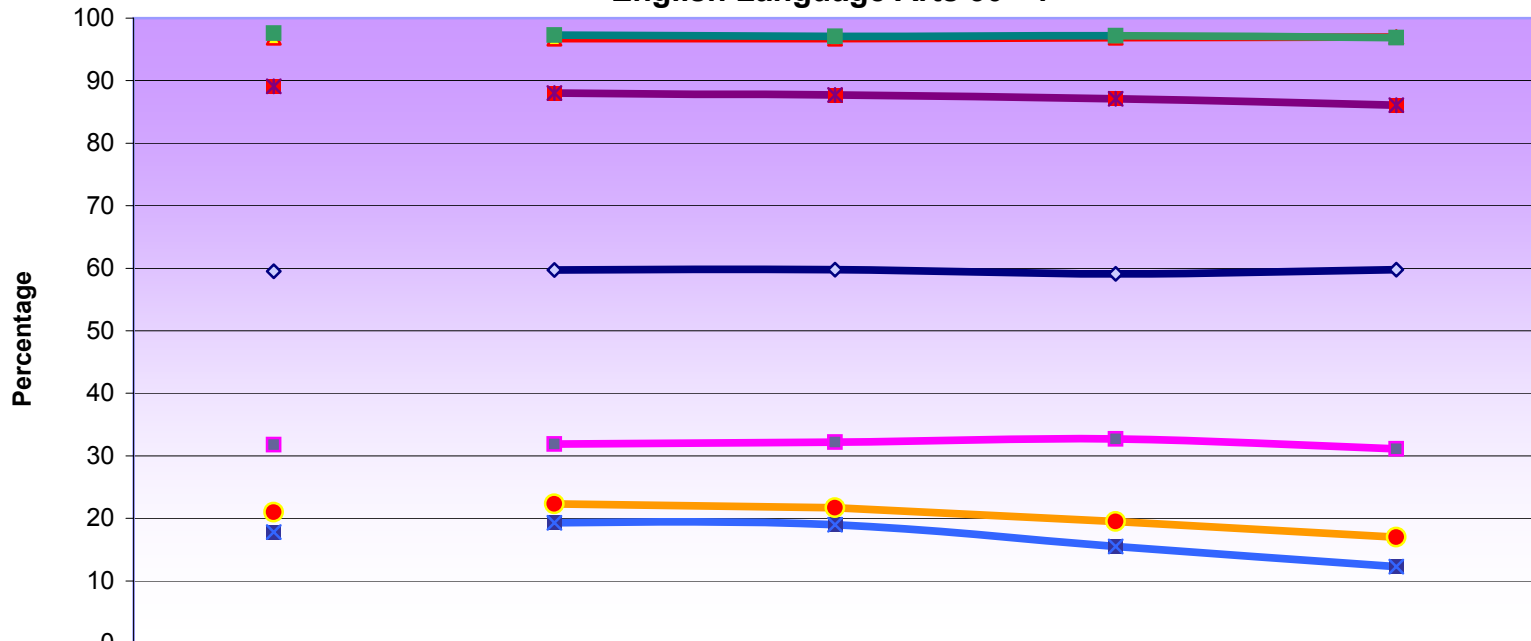


- ◆ Participation
- School Excellence
- ▲ School Acceptable
- Diploma Excellence
- Diploma Acceptable
- Final Excellence
- Final Acceptable

	2004-2005	2005-2006	2006-2007	2007-2008	2008-2009
Participation	38.5	39.0	38.5	38.4	38.9
School Excellence	35.5	37.8	38.4	39.0	39.4
School Acceptable	95.3	95.8	95.9	96.0	95.8
Diploma Excellence	33.4	37.2	37.9	39.2	27.7
Diploma Acceptable	88.2	88.4	89.4	89.2	76.3
Final Excellence	33.0	36.2	37.2	37.5	31.0
Final Acceptable	95.1	95.1	95.5	95.5	89.9

\* As the new Chemistry 30 exam was administered in 2008/2009, results are not directly comparable to prior years.

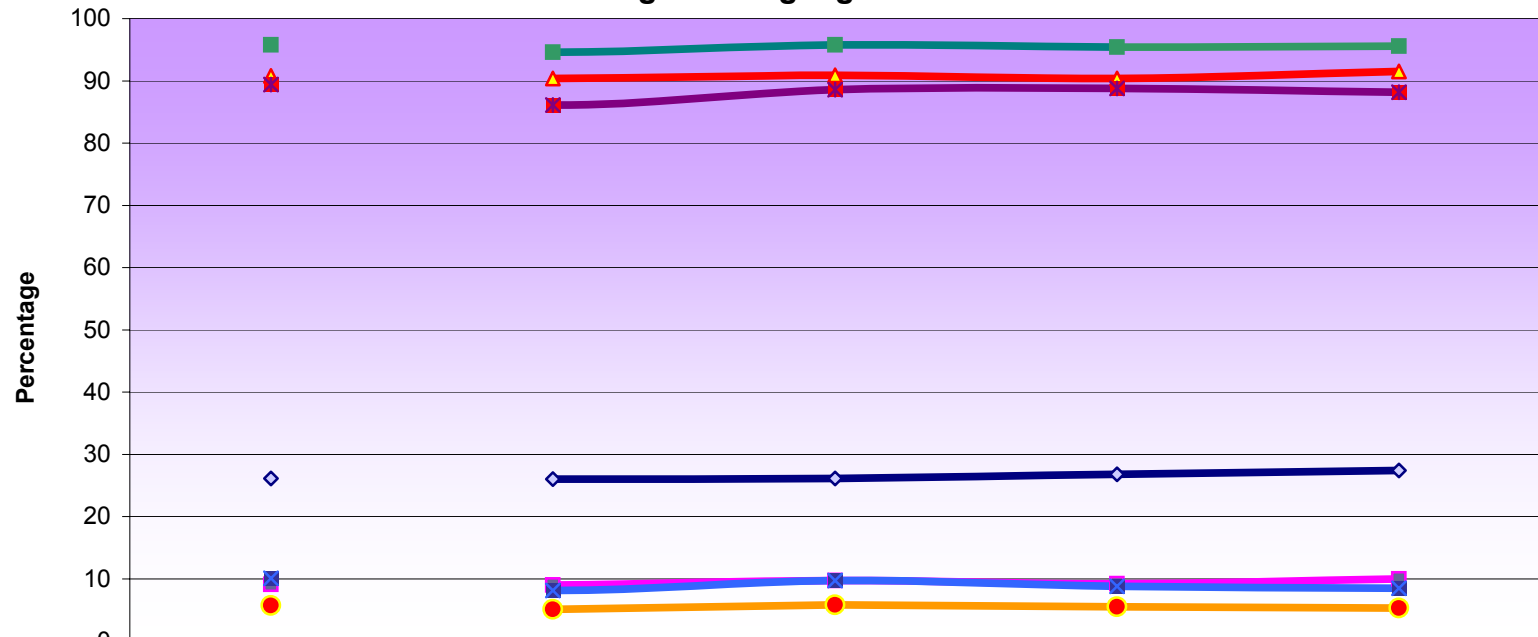
### Diploma Examination Results 2004/2005 to 2008/2009 English Language Arts 30 - 1



	2004-2005	2005-2006	2006-2007	2007-2008	2008-2009
◆ Participation	59.5	59.7	59.8	59.1	59.8
■ School Excellence	31.8	31.9	32.2	32.7	31.1
▲ School Acceptable	96.9	96.7	96.7	96.9	97.0
■ Diploma Excellence	17.8	19.3	19.0	15.5	12.3
■ Diploma Acceptable	89.1	88.0	87.7	87.1	86.1
● Final Excellence	21.0	22.3	21.7	19.5	17.0
■ Final Acceptable	97.6	97.3	97.1	97.2	96.9

\* As test equating is being phased in, results for English Language Arts 30-1 are directly comparable starting from 2005/2006.

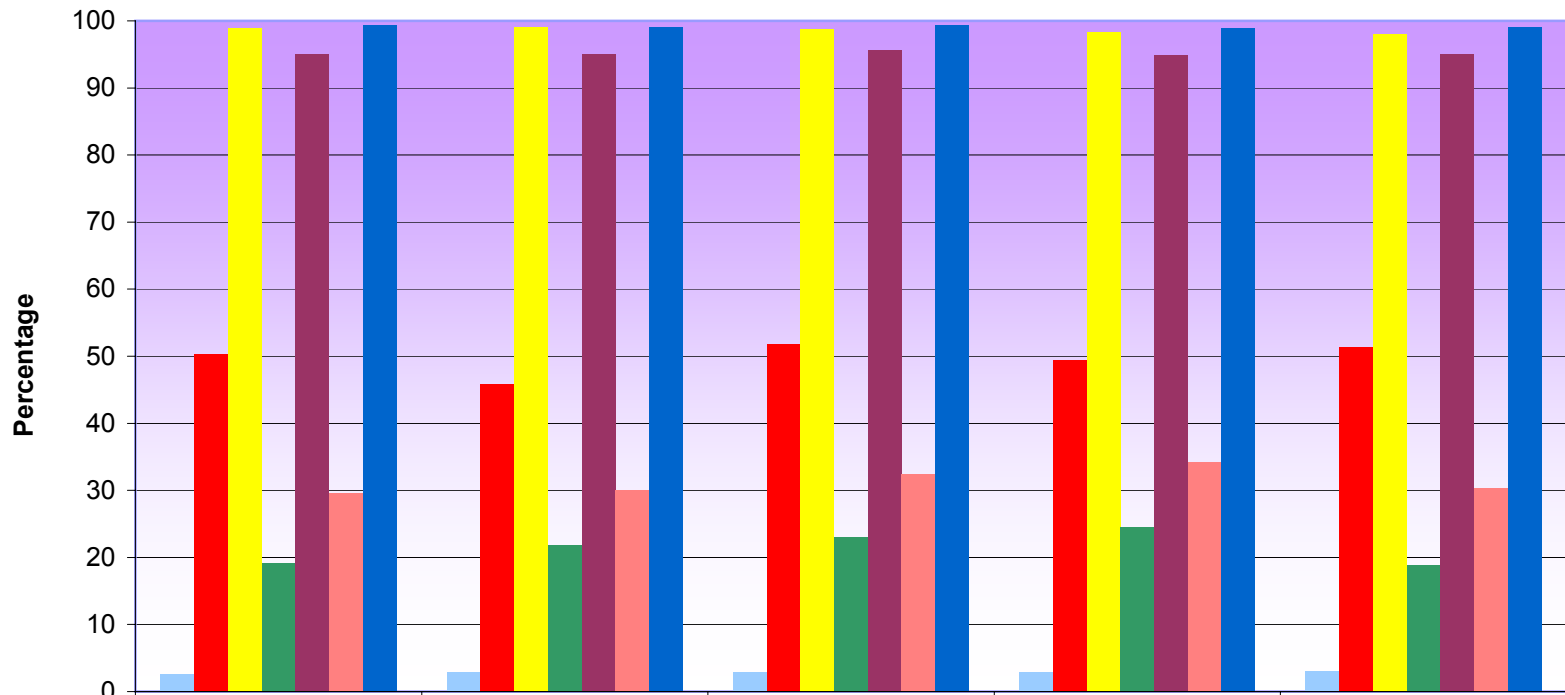
### Diploma Examination Results 2004/2005 to 2008/2009 English Language Arts 30 - 2



	2004-2005	2005-2006	2006-2007	2007-2008	2008-2009
◆ Participation	26.1	26.0	26.1	26.8	27.4
■ School Excellence	9.1	9.0	9.7	9.2	10.0
▲ School Acceptable	90.8	90.4	90.9	90.4	91.5
■ Diploma Excellence	10.1	8.1	9.7	8.8	8.5
■ Diploma Acceptable	89.4	86.1	88.6	88.8	88.2
● Final Excellence	5.7	5.1	5.8	5.5	5.3
■ Final Acceptable	95.8	94.6	95.8	95.4	95.6

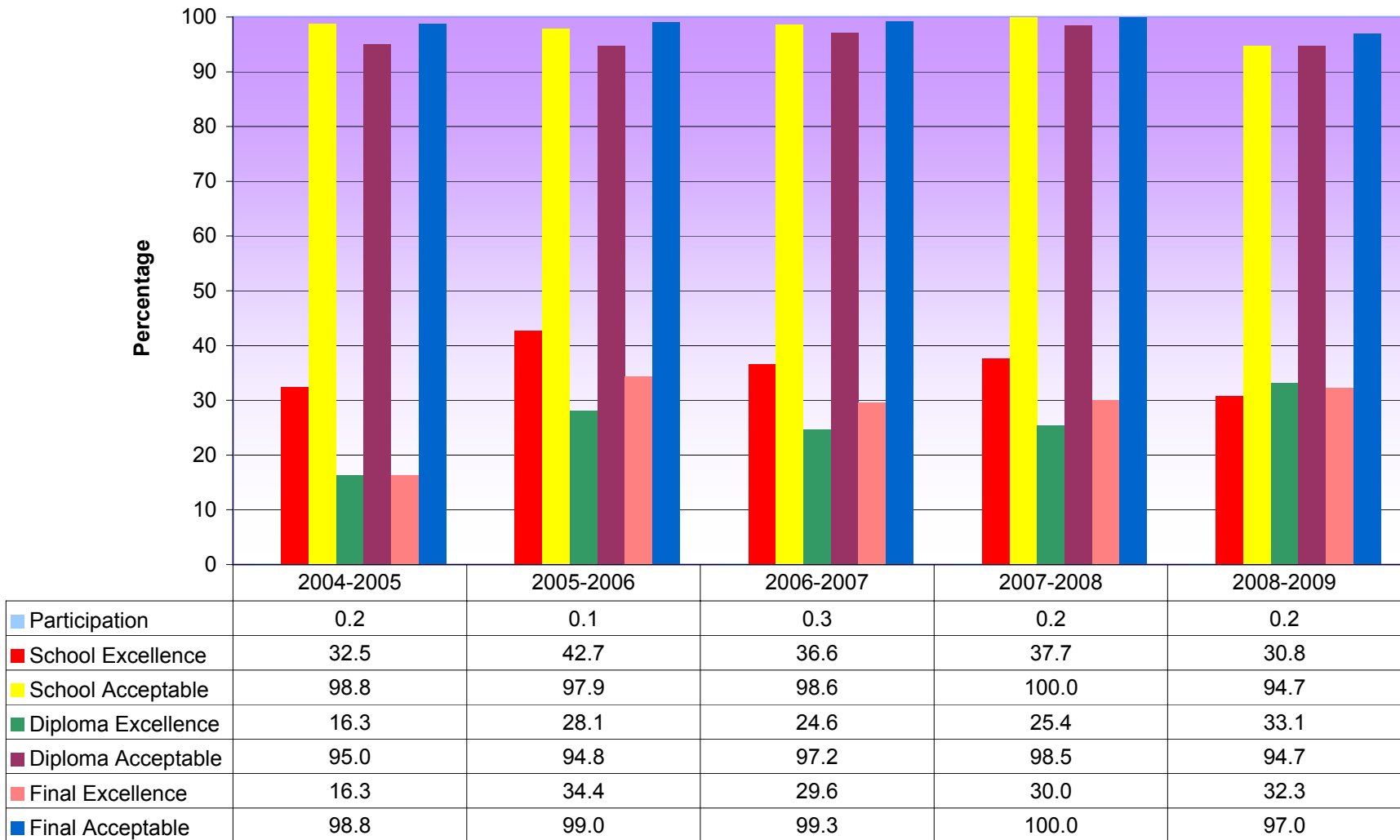
\* As test equating is being phased in, results for English Language Arts 30-2 are directly comparable starting from 2005/2006.

**Diploma Examination Results 2004/2005 to 2008/2009**  
**French Language Arts 30 - 1**

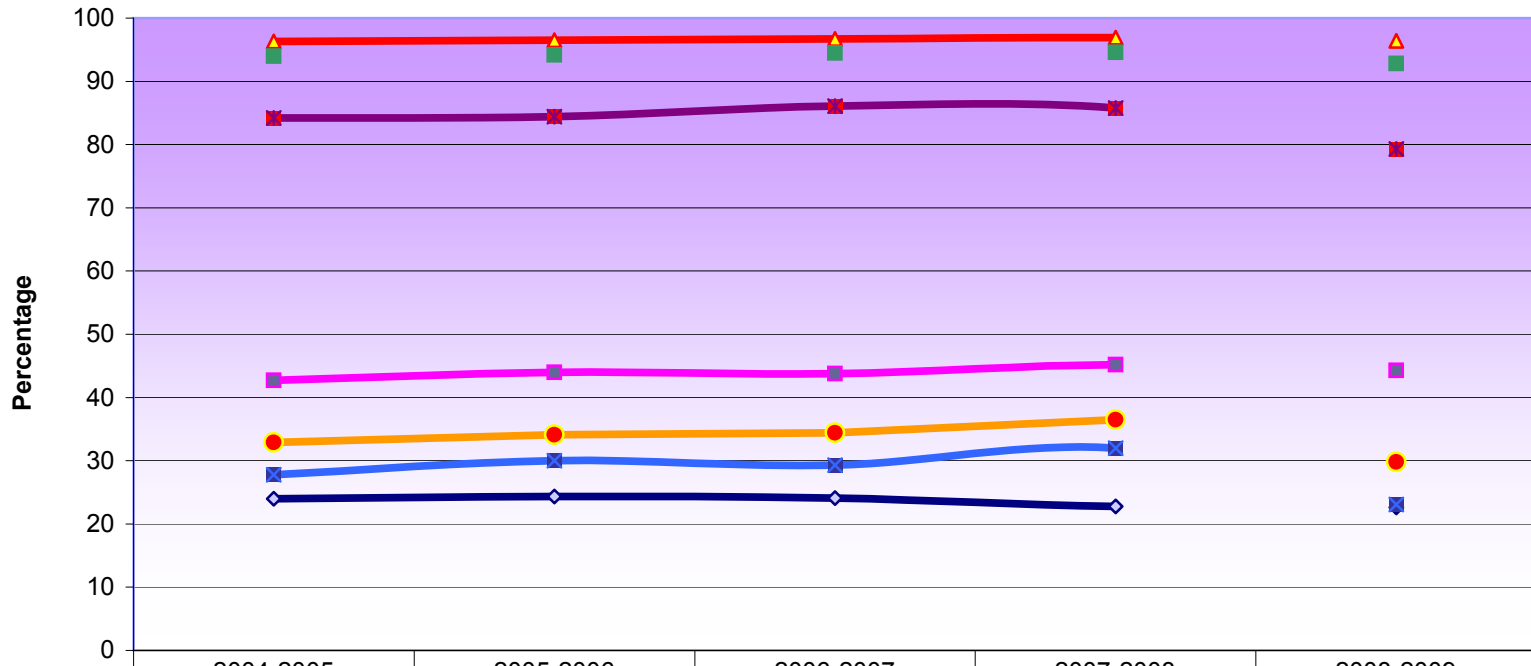


	2004-2005	2005-2006	2006-2007	2007-2008	2008-2009
Participation	2.7	3.0	2.9	2.9	3.0
School Excellence	50.4	45.8	51.8	49.4	51.3
School Acceptable	98.9	99.0	98.8	98.3	98.0
Diploma Excellence	19.1	21.8	23.1	24.5	18.9
Diploma Acceptable	95.1	95.1	95.6	94.9	95.1
Final Excellence	29.6	30.0	32.5	34.2	30.4
Final Acceptable	99.4	99.1	99.4	98.9	99.0

**Diploma Examination Results 2004/2005 to 2008/2009  
Français 30**



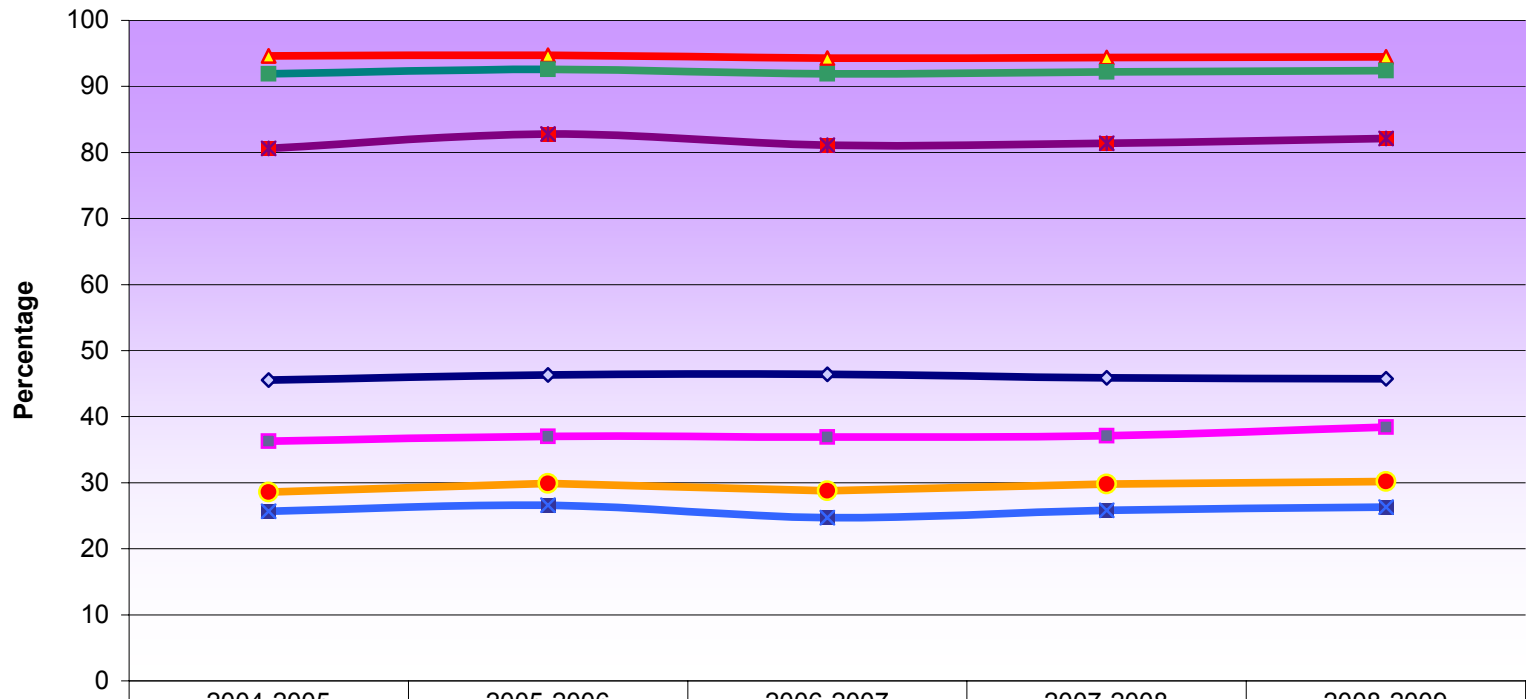
### Diploma Examination Results 2004/2005 to 2008/2009 Physics 30



	2004-2005	2005-2006	2006-2007	2007-2008	2008-2009
◆ Participation	24.0	24.3	24.1	22.8	22.6
■ School Excellence	42.7	44.0	43.8	45.2	44.3
▲ School Acceptable	96.3	96.5	96.7	96.9	96.4
■ Diploma Excellence	27.8	30.0	29.3	32.0	23.1
■ Diploma Acceptable	84.2	84.4	86.1	85.8	79.3
● Final Excellence	32.9	34.1	34.4	36.5	29.8
■ Final Acceptable	94.0	94.2	94.5	94.6	92.8

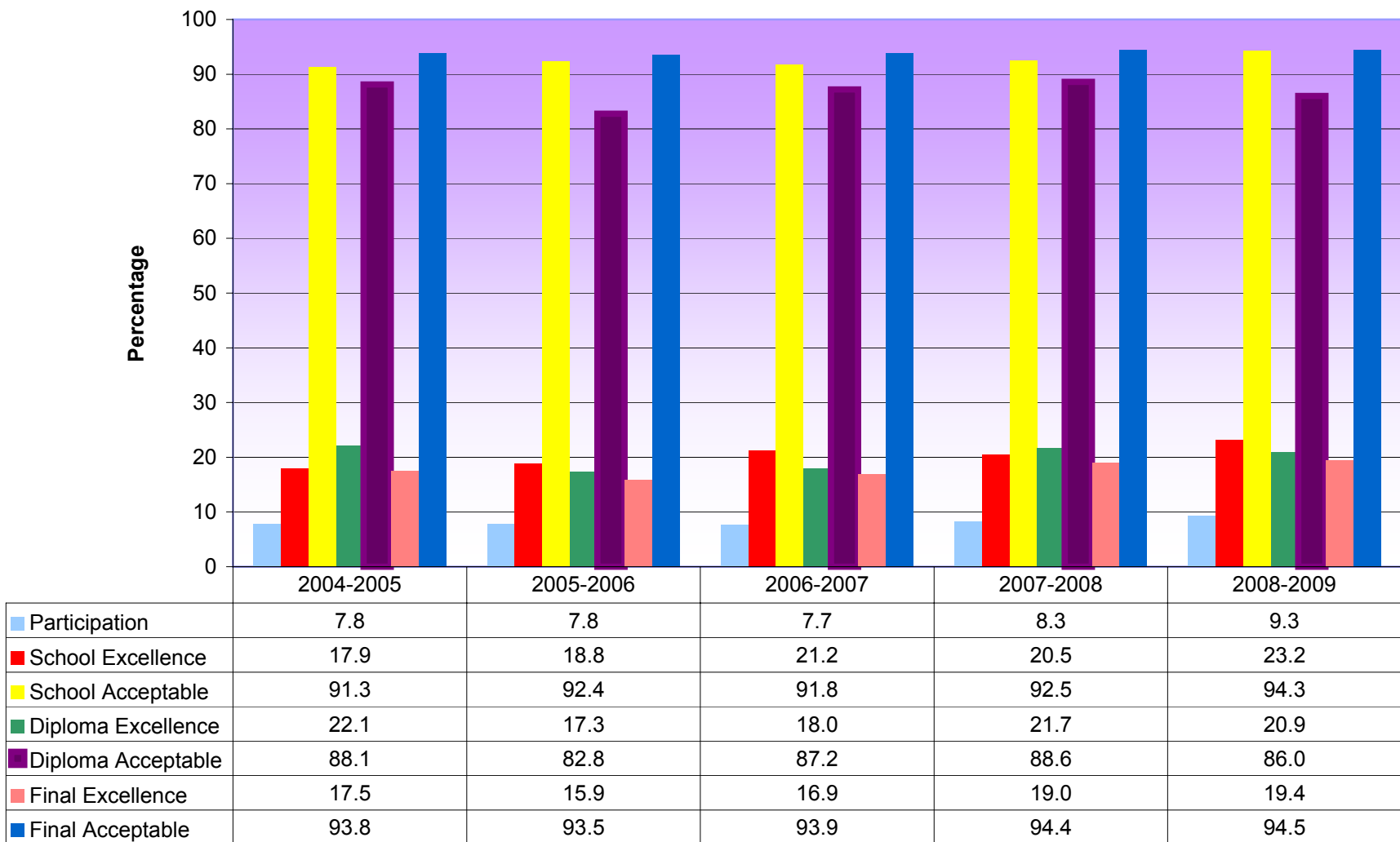
\* As the new Physics 30 exam was administered in 2008/2009, results are not directly comparable to prior years.

### Diploma Examination Results 2004/2005 to 2008/2009 Pure Mathematics 30

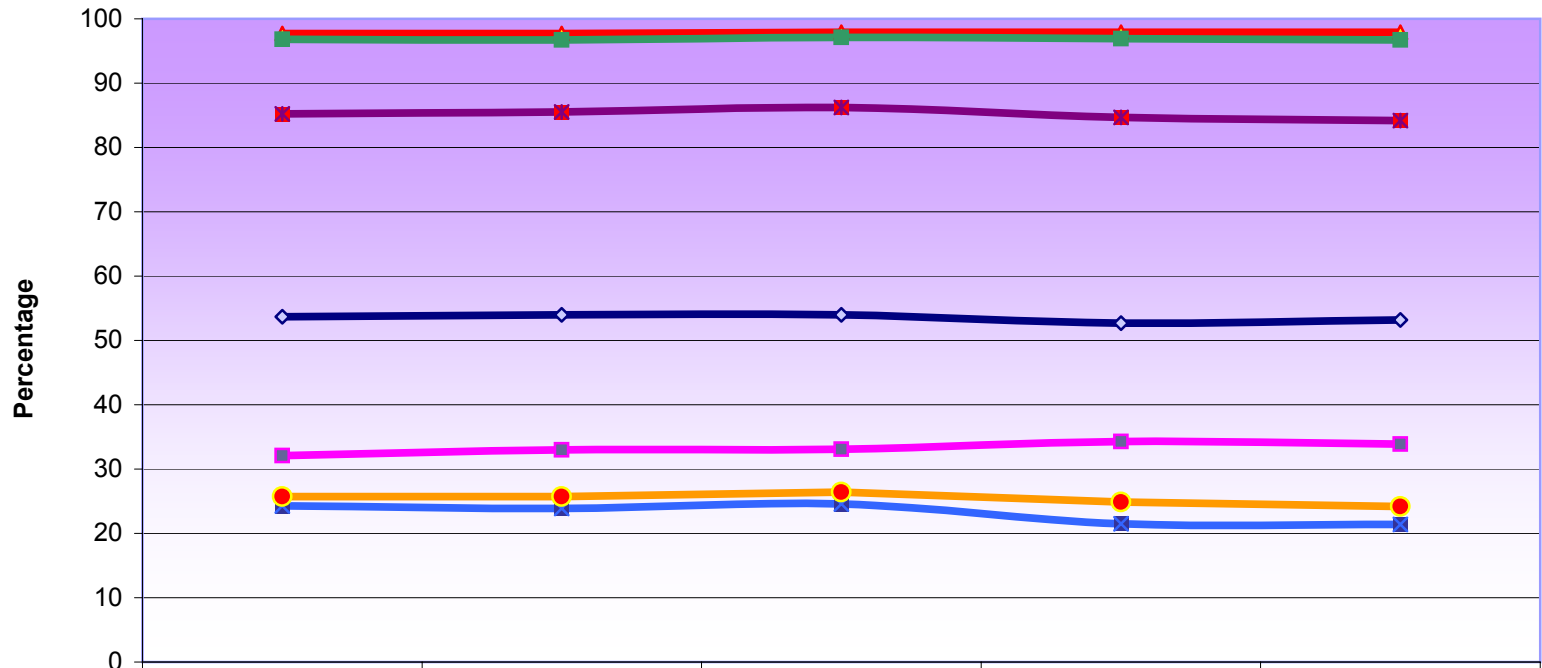


	2004-2005	2005-2006	2006-2007	2007-2008	2008-2009
◆ Participation	45.6	46.3	46.4	45.9	45.8
■ School Excellence	36.3	37.0	36.9	37.1	38.4
▲ School Acceptable	94.6	94.7	94.3	94.4	94.5
× Diploma Excellence	25.7	26.6	24.7	25.8	26.3
■ Diploma Acceptable	80.6	82.8	81.1	81.4	82.1
● Final Excellence	28.6	29.9	28.8	29.8	30.2
■ Final Acceptable	91.9	92.6	91.9	92.2	92.4

### Diploma Examination Results 2004/2005 to 2008/2009 Science 30

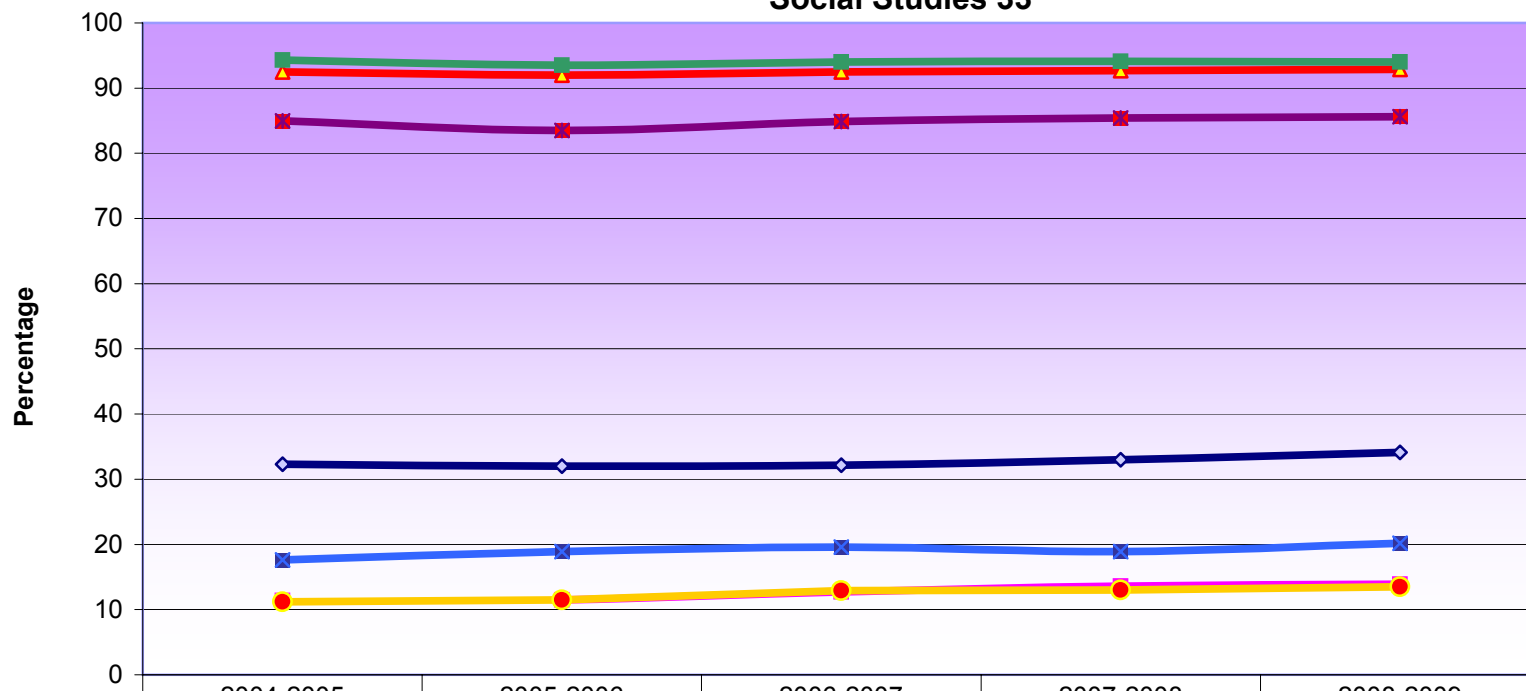


### Diploma Examination Results 2004/2005 to 2008/2009 Social Studies 30



	2004-2005	2005-2006	2006-2007	2007-2008	2008-2009
◆ Participation	53.7	54.0	54.0	52.7	53.2
■ School Excellence	32.1	33.0	33.1	34.3	33.9
▲ School Acceptable	97.7	97.7	97.9	97.9	97.9
■ Diploma Excellence	24.3	23.9	24.6	21.5	21.4
■ Diploma Acceptable	85.2	85.5	86.2	84.7	84.2
● Final Excellence	25.7	25.7	26.4	24.9	24.2
■ Final Acceptable	96.8	96.7	97.1	96.9	96.7

### Diploma Examination Results 2004/2005 to 2008/2009 Social Studies 33



	2004-2005	2005-2006	2006-2007	2007-2008	2008-2009
◆ Participation	32.3	32.0	32.2	33.0	34.1
■ School Excellence	11.4	11.5	12.7	13.6	13.9
▲ School Acceptable	92.5	92.0	92.5	92.7	92.9
■ Diploma Excellence	17.6	18.9	19.6	18.9	20.2
■ Diploma Acceptable	85.0	83.5	84.9	85.4	85.6
● Final Excellence	11.2	11.5	12.9	13.0	13.5
■ Final Acceptable	94.3	93.5	94.0	94.1	94.0