

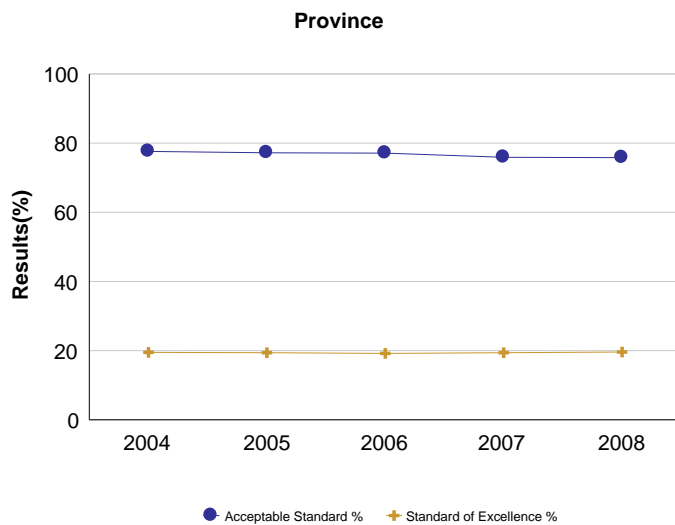
Student Learning Achievement (Grades K-9)



PAT Results By Number Enrolled Measure History

Province: Alberta

	Province				
	2004	2005	2006	2007	2008
N	132,623	131,349	130,504	132,662	130,684
Acceptable Standard %	77.6	77.2	77.1	75.9	75.8
Standard of Excellence %	19.5	19.4	19.2	19.4	19.6



Note: Data values have been suppressed where the number of students is less than 6. Suppression is marked with an asterisk (*).

Aggregated PAT results are based upon a weighted average of Acceptable or Excellence percent meeting standards. The weights are the number of students in the cohort for the course.

Student Learning Achievement: PAT Values reported are weighted averages of PAT Acceptable and PAT Excellence results. Courses included: ELA(Grades 3, 6, 9), Math(Grades 3, 6, 9), Social Studies(Grades 6, 9), Science(Grades 6 only), French Language Arts(Grades 6, 9), Français(Grades 6, 9).

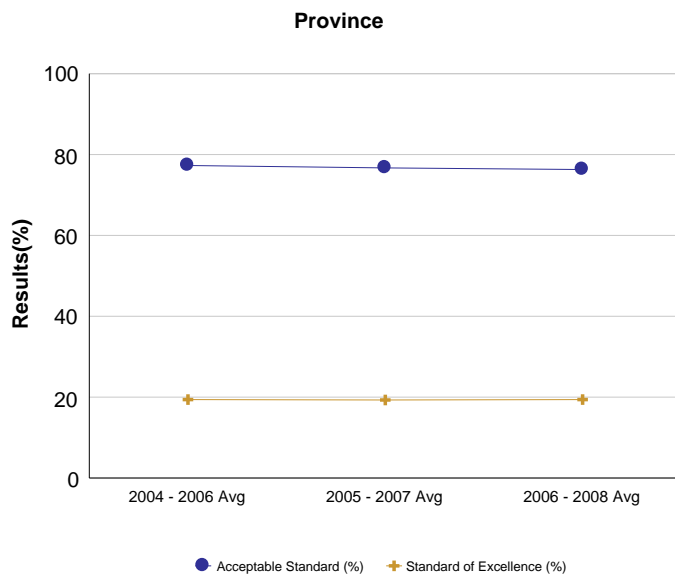
Student Learning Achievement (Grades K-9)



PAT Results By Students Enrolled - 3 Year Rolling Average

Province: Alberta

	Province		
	2004 - 2006 Avg	2005 - 2007 Avg	2006 - 2008 Avg
N	131,492	131,505	131,283
Acceptable Standard (%)	77.3	76.7	76.3
Standard of Excellence (%)	19.4	19.3	19.4



Note: Data values have been suppressed where the number of students is less than 6. Suppression is marked with an asterisk (*).

Aggregated PAT results are based upon a weighted average of Acceptable or Excellence percent meeting standards. The weights are the number of students in the cohort for the course.

Student Learning Achievement: PAT Values reported are weighted averages of PAT Acceptable and PAT Excellence results. Courses included: ELA (Grades 3, 6, 9), Math (Grades 3, 6, 9), Social Studies (Grades 6, 9), Science (Grade 6 only), French Language Arts (Grades 6, 9), Français (Grades 6, 9).

Student Learning Achievement (Grades K-9)



PAT Results Course By Course Summary By Enrolled With Measure Evaluation

Province: Alberta

Course	Measure	Province						
		Achievement	Improvement	Overall	2008		Prev 3 Yr Avg	
					N	%	N	%
English Language Arts 3	Acceptable Standard	Low	Declined Significantly	Concern	42,375	80.1	41,848	81.3
	Standard of Excellence	Intermediate	Maintained	Acceptable	42,375	16.1	41,848	16.0
Mathematics 3	Acceptable Standard	Low	Declined Significantly	Concern	42,392	78.7	41,860	80.7
	Standard of Excellence	Intermediate	Declined Significantly	Issue	42,392	23.9	41,860	25.5
English Language Arts 6	Acceptable Standard	Intermediate	Improved Significantly	Good	44,011	81.1	44,197	78.9
	Standard of Excellence	High	Improved Significantly	Good	44,011	21.0	44,197	17.1
French Language Arts 6	Acceptable Standard	Intermediate	Maintained	Acceptable	2,252	87.7	2,153	86.9
	Standard of Excellence	Intermediate	Improved Significantly	Good	2,252	14.2	2,153	10.3
Français 6	Acceptable Standard	n/a	n/a	n/a	457	94.3	367	93.2
	Standard of Excellence	n/a	n/a	n/a	457	17.1	367	20.2
Mathematics 6	Acceptable Standard	Low	Declined Significantly	Concern	44,012	74.6	44,212	75.8
	Standard of Excellence	Intermediate	Maintained	Acceptable	44,012	15.9	44,212	16.1
Science 6	Acceptable Standard	Low	Declined Significantly	Concern	43,878	74.8	44,115	77.7
	Standard of Excellence	Intermediate	Declined Significantly	Issue	43,878	24.1	44,115	26.7
Social Studies 6	Acceptable Standard	Intermediate	Maintained	Acceptable	43,460	77.9	43,975	78.1
	Standard of Excellence	High	Improved Significantly	Good	43,460	23.8	43,975	22.2
English Language Arts 9	Acceptable Standard	Intermediate	Declined Significantly	Issue	43,962	76.5	45,266	77.6
	Standard of Excellence	High	Improved Significantly	Good	43,962	14.8	45,266	14.2
French Language Arts 9	Acceptable Standard	Intermediate	Maintained	Acceptable	2,307	84.5	2,217	83.5
	Standard of Excellence	Intermediate	Maintained	Acceptable	2,307	12.4	2,217	12.5
Français 9	Acceptable Standard	n/a	n/a	n/a	316	84.8	258	85.0
	Standard of Excellence	n/a	n/a	n/a	316	11.7	258	14.9
Mathematics 9	Acceptable Standard	Intermediate	Declined Significantly	Issue	43,465	65.7	45,006	67.3
	Standard of Excellence	Intermediate	Maintained	Acceptable	43,465	18.5	45,006	18.4
Science 9	Acceptable Standard	Intermediate	Improved Significantly	Good	43,727	69.3	45,153	68.2
	Standard of Excellence	High	Declined Significantly	Issue	43,727	13.0	45,153	13.6
Social Studies 9	Acceptable Standard	Intermediate	Maintained	Acceptable	43,395	71.7	44,983	71.7
	Standard of Excellence	Intermediate	Improved	Good	43,395	18.9	44,983	18.6

Note: Data values have been suppressed where the number of students is less than 6. Suppression is marked with an asterisk (*).

Too few jurisdictions offer Français (Grades 6, 9) for an Achievement Evaluation to be calculated. However, the results from Français (Grades 6, 9) are included in the aggregation of all PAT courses.

Student Learning Achievement (Grades K-9)



Measure Evaluation Reference - Achievement Evaluation

Province: Alberta

Achievement evaluation is based upon a comparison of Current Year data to a set of standards which remain consistent over time. The Standards are calculated by taking the 3 year average of baseline data for each measure across all school jurisdictions and calculating the 5th, 25th, 75th, and 95th percentiles. Once calculated, these standards remain in place from year to year to allow for consistent planning and evaluation.

The table below shows the range of values defining the 5 achievement evaluation levels for each measure.

Course	Measure	Very Low	Low	Intermediate	High	Very High
English Language Arts 3	Acceptable Standard	0.00 - 72.53	72.53 - 80.49	80.49 - 89.12	89.12 - 93.04	93.04 - 100.00
	Standard of Excellence	0.00 - 6.06	6.06 - 11.35	11.35 - 16.93	16.93 - 20.27	20.27 - 100.00
Mathematics 3	Acceptable Standard	0.00 - 73.66	73.66 - 81.42	81.42 - 88.39	88.39 - 91.92	91.92 - 100.00
	Standard of Excellence	0.00 - 17.25	17.25 - 22.97	22.97 - 30.79	30.79 - 36.99	36.99 - 100.00
English Language Arts 6	Acceptable Standard	0.00 - 67.95	67.95 - 78.40	78.40 - 86.09	86.09 - 91.37	91.37 - 100.00
	Standard of Excellence	0.00 - 6.83	6.83 - 11.65	11.65 - 17.36	17.36 - 22.46	22.46 - 100.00
French Language Arts 6	Acceptable Standard	0.00 - 41.69	41.69 - 73.54	73.54 - 92.32	92.32 - 97.93	97.93 - 100.00
	Standard of Excellence	0.00 - 2.72	2.72 - 8.13	8.13 - 15.29	15.29 - 23.86	23.86 - 100.00
Mathematics 6	Acceptable Standard	0.00 - 65.88	65.88 - 75.70	75.70 - 84.77	84.77 - 90.26	90.26 - 100.00
	Standard of Excellence	0.00 - 8.68	8.68 - 13.49	13.49 - 19.62	19.62 - 25.59	25.59 - 100.00
Science 6	Acceptable Standard	0.00 - 60.36	60.36 - 78.51	78.51 - 86.46	86.46 - 90.64	90.64 - 100.00
	Standard of Excellence	0.00 - 11.74	11.74 - 17.42	17.42 - 25.34	25.34 - 34.31	34.31 - 100.00
Social Studies 6	Acceptable Standard	0.00 - 59.22	59.22 - 77.09	77.09 - 85.44	85.44 - 89.15	89.15 - 100.00
	Standard of Excellence	0.00 - 7.81	7.81 - 14.67	14.67 - 20.59	20.59 - 28.12	28.12 - 100.00
English Language Arts 9	Acceptable Standard	0.00 - 63.55	63.55 - 75.66	75.66 - 83.70	83.70 - 90.27	90.27 - 100.00
	Standard of Excellence	0.00 - 5.96	5.96 - 9.43	9.43 - 14.72	14.72 - 20.46	20.46 - 100.00
French Language Arts 9	Acceptable Standard	0.00 - 67.59	67.59 - 81.33	81.33 - 92.06	92.06 - 97.26	97.26 - 100.00
	Standard of Excellence	0.00 - 1.67	1.67 - 6.81	6.81 - 17.11	17.11 - 28.68	28.68 - 100.00
Mathematics 9	Acceptable Standard	0.00 - 50.90	50.90 - 59.61	59.61 - 69.06	69.06 - 83.15	83.15 - 100.00
	Standard of Excellence	0.00 - 8.46	8.46 - 11.96	11.96 - 18.90	18.90 - 23.96	23.96 - 100.00
Science 9	Acceptable Standard	0.00 - 55.16	55.16 - 64.99	64.99 - 75.89	75.89 - 80.43	80.43 - 100.00
	Standard of Excellence	0.00 - 6.10	6.10 - 7.54	7.54 - 12.59	12.59 - 16.19	16.19 - 100.00
Social Studies 9	Acceptable Standard	0.00 - 57.88	57.88 - 68.58	68.58 - 79.36	79.36 - 87.82	87.82 - 100.00
	Standard of Excellence	0.00 - 9.39	9.39 - 13.53	13.53 - 19.67	19.67 - 24.12	24.12 - 100.00

Notes:

The range of values at each evaluation level is interpreted as "greater than or equal to" the "Low" value, and "less than" the "High" value. For the Very High category, values range from "greater than" the "Low" value to 100%.

Too few jurisdictions offer Français (Grades 6, 9) for an Achievement Evaluation to be calculated. However, the results from Français (Grades 6, 9) are included in the aggregation of all PAT courses.

Students Learning Achievement (Grades K-9)



Measure Evaluation Reference - Improvement and Overall Evaluation Table

Province: Alberta

Improvement Table

For each jurisdiction, improvement evaluation consists of comparing the Current Year result for each measure with the previous three-year average. A chi-square statistical test is used to determine the significance of the improvement. This test takes into account the size of the jurisdiction in the calculation to make improvement evaluation fair across jurisdictions of different sizes.

The table below shows the definition of the 5 improvement evaluation levels based upon the chi-square result.

Evaluation Category	Chi-Square Range
Declined Significantly	3.84 + (current < previous 3-year average)
Declined	1.00 - 3.83 (current < previous 3-year average)
Maintained	less than 1.00
Improved	1.00 - 3.83 (current > previous 3-year average)
Improved Significantly	3.84 + (current > previous 3-year average)

Overall Evaluation Table

The overall evaluation combines the Achievement Evaluation and the Improvement Evaluation. The table below illustrates how the Achievement and Improvement evaluations are combined to get the overall evaluation.

	Achievement				
	Very High	High	Intermediate	Low	Very Low
Improved Significantly	Excellent	Good	Good	Good	Acceptable
Improved	Excellent	Good	Good	Acceptable	Issue
Maintained	Excellent	Good	Acceptable	Issue	Issue
Declined	Good	Acceptable	Issue	Issue	Concern
Declined Significantly	Acceptable	Issue	Issue	Concern	Concern

Student Learning Achievement (Grades K-9)



PAT Results Course Summary - By Number Writing

Province: Alberta

		Province	
		2008	2005 - 2007 Avg
English Language Arts 3	Number Writing	38,066	37,793
	Acceptable Standard %	89.1	90.0
	Standard of Excellence %	17.9	17.7
Mathematics 3	Number Writing	38,361	37,950
	Acceptable Standard %	87.0	89.0
	Standard of Excellence %	26.4	28.1
English Language Arts 6	Number Writing	39,406	39,730
	Acceptable Standard %	90.6	87.7
	Standard of Excellence %	23.4	19.0
French Language Arts 6	Number Writing	2,153	2,080
	Acceptable Standard %	91.8	90.0
	Standard of Excellence %	14.9	10.7
Français 6	Number Writing	450	358
	Acceptable Standard %	95.8	95.3
	Standard of Excellence %	17.3	20.6
Mathematics 6	Number Writing	39,592	40,012
	Acceptable Standard %	83.0	83.8
	Standard of Excellence %	17.7	17.7
Science 6	Number Writing	39,043	39,660
	Acceptable Standard %	84.1	86.4
	Standard of Excellence %	27.1	29.7
Social Studies 6	Number Writing	38,748	39,600
	Acceptable Standard %	87.3	86.7
	Standard of Excellence %	26.7	24.7
English Language Arts 9	Number Writing	38,576	39,694
	Acceptable Standard %	87.2	88.5
	Standard of Excellence %	16.8	16.1
French Language Arts 9	Number Writing	2,234	2,117
	Acceptable Standard %	87.2	87.3
	Standard of Excellence %	12.8	13.1
Français 9	Number Writing	309	251
	Acceptable Standard %	86.7	87.2
	Standard of Excellence %	12.0	15.3
Mathematics 9	Number Writing	38,269	39,438
	Acceptable Standard %	74.6	76.8
	Standard of Excellence %	21.0	21.0
Science 9	Number Writing	38,914	39,908
	Acceptable Standard %	77.9	77.1
	Standard of Excellence %	14.7	15.4
Social Studies 9	Number Writing	38,574	39,699
	Acceptable Standard %	80.7	81.3
	Standard of Excellence %	21.3	21.1

Note: Data values have been suppressed where the number of students is less than 6. Suppression is marked with an asterisk (*).

Student Learning Achievement (Grades K-9)



PAT Results By Course

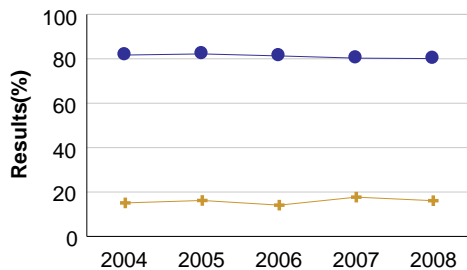
Province: Alberta

English Language Arts 3

		Province				
		2004	2005	2006	2007	2008
Participation	Students Enrolled	42,592	41,795	41,302	42,446	42,375
	Students Writing	38,576	37,713	37,405	38,260	38,066
	Students Writing (%)	90.6	90.2	90.6	90.1	89.8
Results Based on Number Enrolled	Acceptable Standard (%)	81.7	82.2	81.3	80.3	80.1
	Standard of Excellence (%)	15.1	16.2	14.1	17.7	16.1
	Below Acceptable Standard (%)	8.8	8.1	9.2	9.8	9.8
Results Based on Number Writing	Acceptable Standard (%)	90.2	91.1	89.8	89.1	89.1
	Standard of Excellence (%)	16.7	18.0	15.6	19.6	17.9
	Below Acceptable Standard (%)	9.8	8.9	10.2	10.9	10.9

Results Based on Number Enrolled

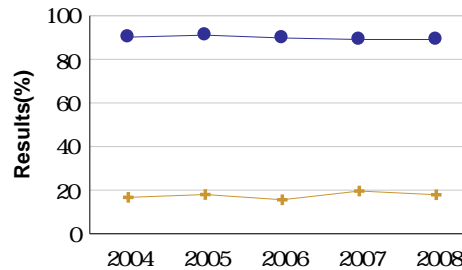
Province



● Acceptable Standard (%) + Standard of Excellence (%)

Results Based on Number Writing

Province



● Acceptable Standard (%) + Standard of Excellence (%)

Note: Data values have been suppressed where the number of students is less than 6. Suppression is marked with an asterisk (*).
Grade 9 Science results are for information only. Grade 9 Science is not currently included in the PAT results aggregation measure.

Student Learning Achievement (Grades K-9)



PAT Results By Course - 3 Year Rolling Average

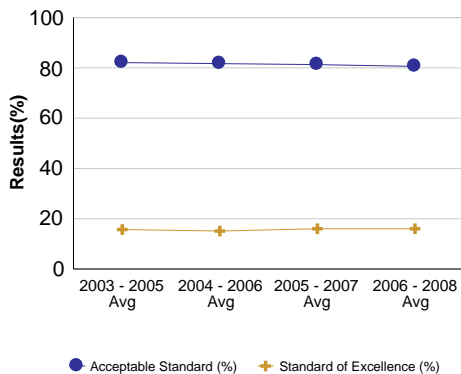
Province: Alberta

English Language Arts 3

		Province			
		2003 - 2005 Avg	2004 - 2006 Avg	2005 - 2007 Avg	2006 - 2008 Avg
Participation	Students Enrolled	42,347	41,896	41,848	42,041
	Students Writing	38,433	37,898	37,793	37,910
	Students Writing (%)	90.8	90.5	90.3	90.2
Results Based on Number Enrolled	Acceptable Standard (%)	82.1	81.7	81.3	80.6
	Standard of Excellence (%)	15.7	15.1	16.0	16.0
	Below Acceptable Standard (%)	8.7	8.7	9.0	9.6
Results Based on Number Writing	Acceptable Standard (%)	90.5	90.4	90.0	89.4
	Standard of Excellence (%)	17.3	16.7	17.7	17.7
	Below Acceptable Standard (%)	9.5	9.6	10.0	10.6

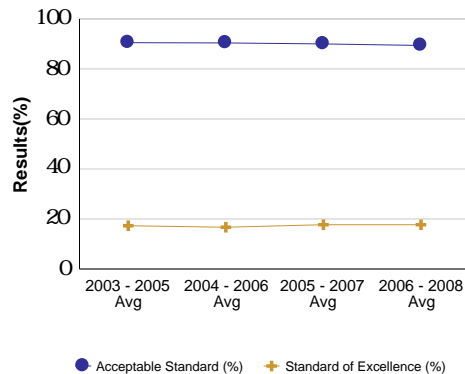
Results Based on Number Enrolled

Province



Results Based on Number Writing

Province



Note: Data values have been suppressed where the number of students is less than 6. Suppression is marked with an asterisk (*).

Grade 9 Science results are for information only. Grade 9 Science is not currently included in the PAT results aggregation measure.

Student Learning Achievement (Grades K-9)



PAT Results By Course

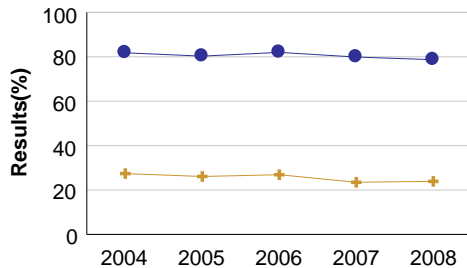
Province: Alberta

Mathematics 3

		Province				
		2004	2005	2006	2007	2008
Participation	Students Enrolled	42,598	41,813	41,305	42,462	42,392
	Students Writing	39,067	37,952	37,488	38,409	38,361
	Students Writing (%)	91.7	90.8	90.8	90.5	90.5
Results Based on Number Enrolled	Acceptable Standard (%)	81.8	80.3	82.0	79.9	78.7
	Standard of Excellence (%)	27.4	26.1	26.9	23.5	23.9
	Below Acceptable Standard (%)	9.9	10.5	8.8	10.6	11.8
Results Based on Number Writing	Acceptable Standard (%)	89.2	88.5	90.3	88.3	87.0
	Standard of Excellence (%)	29.9	28.8	29.7	26.0	26.4
	Below Acceptable Standard (%)	10.8	11.5	9.7	11.7	13.0

Results Based on Number Enrolled

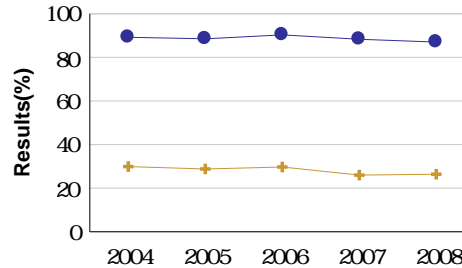
Province



● Acceptable Standard (%) + Standard of Excellence (%)

Results Based on Number Writing

Province



● Acceptable Standard (%) + Standard of Excellence (%)

Note: Data values have been suppressed where the number of students is less than 6. Suppression is marked with an asterisk (*).
Grade 9 Science results are for information only. Grade 9 Science is not currently included in the PAT results aggregation measure.

Student Learning Achievement (Grades K-9)



PAT Results By Course - 3 Year Rolling Average

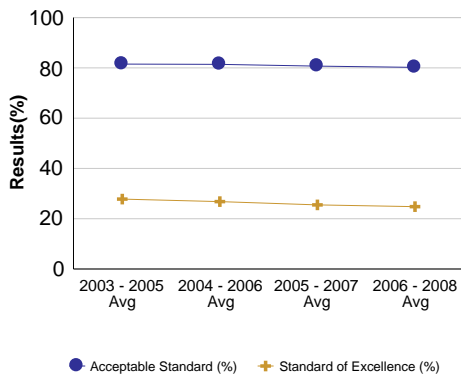
Province: Alberta

Mathematics 3

		Province			
		2003 - 2005 Avg	2004 - 2006 Avg	2005 - 2007 Avg	2006 - 2008 Avg
Participation	Students Enrolled	42,357	41,905	41,860	42,053
	Students Writing	38,768	38,169	37,950	38,086
	Students Writing (%)	91.5	91.1	90.7	90.6
Results Based on Number Enrolled	Acceptable Standard (%)	81.5	81.4	80.7	80.2
	Standard of Excellence (%)	27.8	26.8	25.5	24.8
	Below Acceptable Standard (%)	10.1	9.7	9.9	10.4
Results Based on Number Writing	Acceptable Standard (%)	89.0	89.3	89.0	88.5
	Standard of Excellence (%)	30.3	29.4	28.1	27.4
	Below Acceptable Standard (%)	11.0	10.7	11.0	11.5

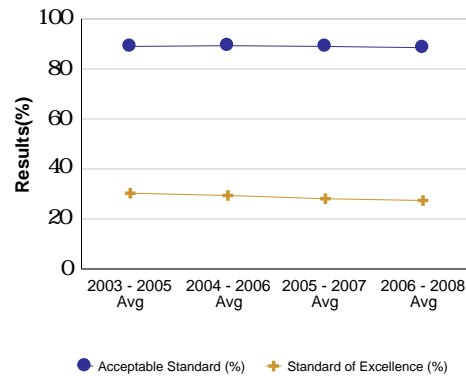
Results Based on Number Enrolled

Province



Results Based on Number Writing

Province



Note: Data values have been suppressed where the number of students is less than 6. Suppression is marked with an asterisk (*).

Grade 9 Science results are for information only. Grade 9 Science is not currently included in the PAT results aggregation measure.

Student Learning Achievement (Grades K-9)



PAT Results By Course

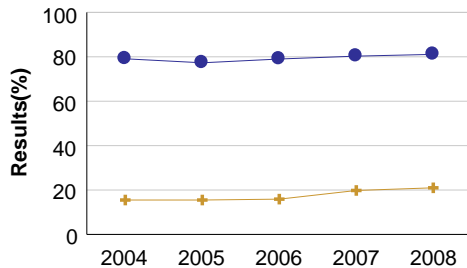
Province: Alberta

English Language Arts 6

		Province				
		2004	2005	2006	2007	2008
Participation	Students Enrolled	44,741	43,624	44,111	44,855	44,011
	Students Writing	40,668	39,235	39,754	40,202	39,406
	Students Writing (%)	90.9	89.9	90.1	89.6	89.5
Results Based on Number Enrolled	Acceptable Standard (%)	79.1	77.3	79.0	80.3	81.1
	Standard of Excellence (%)	15.5	15.5	15.9	19.8	21.0
	Below Acceptable Standard (%)	11.8	12.6	11.1	9.3	8.4
Results Based on Number Writing	Acceptable Standard (%)	87.0	86.0	87.6	89.6	90.6
	Standard of Excellence (%)	17.0	17.2	17.7	22.1	23.4
	Below Acceptable Standard (%)	13.0	14.0	12.4	10.4	9.4

Results Based on Number Enrolled

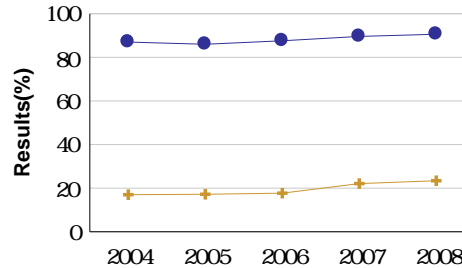
Province



● Acceptable Standard (%) + Standard of Excellence (%)

Results Based on Number Writing

Province



● Acceptable Standard (%) + Standard of Excellence (%)

Note: Data values have been suppressed where the number of students is less than 6. Suppression is marked with an asterisk (*). Grade 9 Science results are for information only. Grade 9 Science is not currently included in the PAT results aggregation measure.

Student Learning Achievement (Grades K-9)



PAT Results By Course - 3 Year Rolling Average

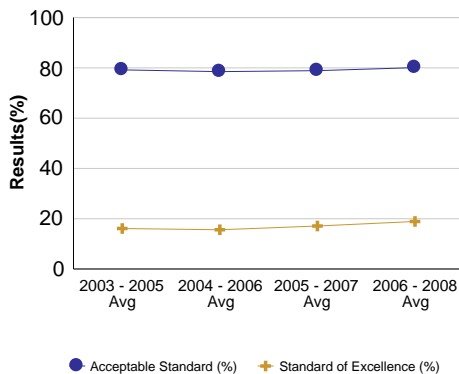
Province: Alberta

English Language Arts 6

		Province			
		2003 - 2005 Avg	2004 - 2006 Avg	2005 - 2007 Avg	2006 - 2008 Avg
Participation	Students Enrolled	44,437	44,159	44,197	44,326
	Students Writing	40,267	39,886	39,730	39,787
	Students Writing (%)	90.6	90.3	89.9	89.8
Results Based on Number Enrolled	Acceptable Standard (%)	79.2	78.5	78.9	80.1
	Standard of Excellence (%)	16.1	15.6	17.1	18.9
	Below Acceptable Standard (%)	11.4	11.9	11.0	9.6
Results Based on Number Writing	Acceptable Standard (%)	87.4	86.9	87.7	89.3
	Standard of Excellence (%)	17.7	17.3	19.0	21.1
	Below Acceptable Standard (%)	12.6	13.1	12.3	10.7

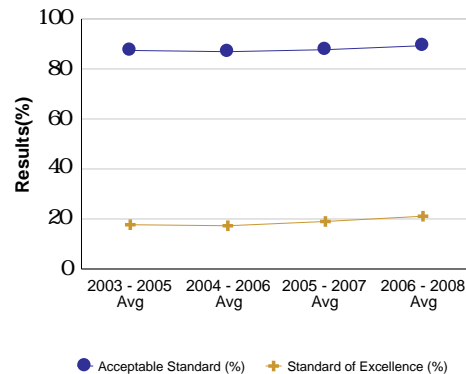
Results Based on Number Enrolled

Province



Results Based on Number Writing

Province



Note: Data values have been suppressed where the number of students is less than 6. Suppression is marked with an asterisk (*).

Grade 9 Science results are for information only. Grade 9 Science is not currently included in the PAT results aggregation measure.

Student Learning Achievement (Grades K-9)



PAT Results By Course

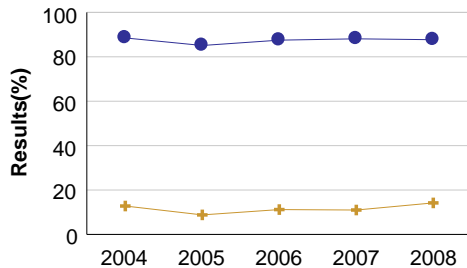
Province: Alberta

French Language Arts 6

		Province				
		2004	2005	2006	2007	2008
Participation	Students Enrolled	2,164	2,050	2,089	2,320	2,252
	Students Writing	2,074	1,971	2,007	2,261	2,153
	Students Writing (%)	95.8	96.1	96.1	97.5	95.6
Results Based on Number Enrolled	Acceptable Standard (%)	88.5	85.1	87.5	88.1	87.7
	Standard of Excellence (%)	12.8	8.8	11.2	11.0	14.2
	Below Acceptable Standard (%)	7.3	11.0	8.6	9.4	7.9
Results Based on Number Writing	Acceptable Standard (%)	92.3	88.5	91.0	90.4	91.8
	Standard of Excellence (%)	13.4	9.1	11.7	11.3	14.9
	Below Acceptable Standard (%)	7.7	11.5	9.0	9.6	8.2

Results Based on Number Enrolled

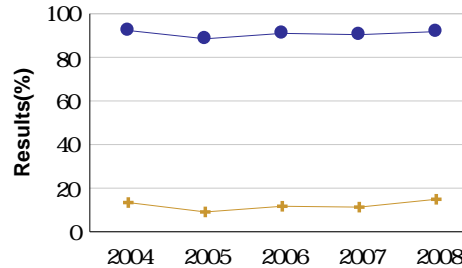
Province



● Acceptable Standard (%) + Standard of Excellence (%)

Results Based on Number Writing

Province



● Acceptable Standard (%) + Standard of Excellence (%)

Note: Data values have been suppressed where the number of students is less than 6. Suppression is marked with an asterisk (*).
Grade 9 Science results are for information only. Grade 9 Science is not currently included in the PAT results aggregation measure.

Student Learning Achievement (Grades K-9)



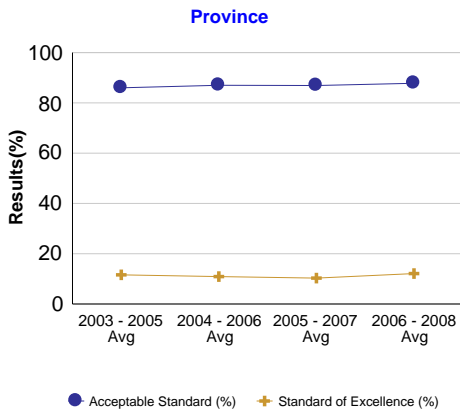
PAT Results By Course - 3 Year Rolling Average

Province: Alberta

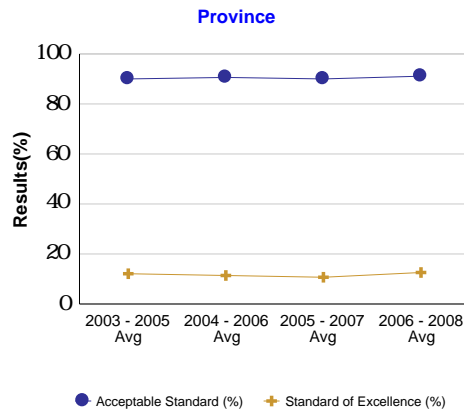
French Language Arts 6

		Province			
		2003 - 2005 Avg	2004 - 2006 Avg	2005 - 2007 Avg	2006 - 2008 Avg
Participation	Students Enrolled	2,074	2,101	2,153	2,220
	Students Writing	1,983	2,017	2,080	2,140
	Students Writing (%)	95.6	96.0	96.6	96.4
Results Based on Number Enrolled	Acceptable Standard (%)	86.0	87.0	86.9	87.8
	Standard of Excellence (%)	11.6	10.9	10.3	12.1
	Below Acceptable Standard (%)	9.6	9.0	9.7	8.6
Results Based on Number Writing	Acceptable Standard (%)	90.0	90.6	90.0	91.1
	Standard of Excellence (%)	12.1	11.4	10.7	12.6
	Below Acceptable Standard (%)	10.0	9.4	10.0	8.9

Results Based on Number Enrolled



Results Based on Number Writing



Note: Data values have been suppressed where the number of students is less than 6. Suppression is marked with an asterisk (*).

Grade 9 Science results are for information only. Grade 9 Science is not currently included in the PAT results aggregation measure.

Student Learning Achievement (Grades K-9)



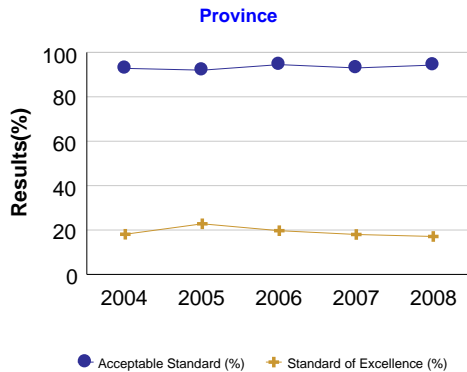
PAT Results By Course

Province: Alberta

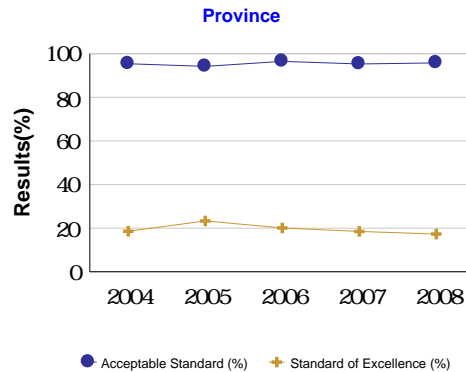
Français 6

		Province				
		2004	2005	2006	2007	2008
Participation	Students Enrolled	293	338	346	416	457
	Students Writing	285	330	339	406	450
	Students Writing (%)	97.3	97.6	98.0	97.6	98.5
Results Based on Number Enrolled	Acceptable Standard (%)	92.8	92.0	94.5	93.0	94.3
	Standard of Excellence (%)	18.1	22.8	19.7	18.0	17.1
	Below Acceptable Standard (%)	4.4	5.6	3.5	4.6	4.2
Results Based on Number Writing	Acceptable Standard (%)	95.4	94.2	96.5	95.3	95.8
	Standard of Excellence (%)	18.6	23.3	20.1	18.5	17.3
	Below Acceptable Standard (%)	4.6	5.8	3.5	4.7	4.2

Results Based on Number Enrolled



Results Based on Number Writing



Note: Data values have been suppressed where the number of students is less than 6. Suppression is marked with an asterisk (*).
Grade 9 Science results are for information only. Grade 9 Science is not currently included in the PAT results aggregation measure.

Student Learning Achievement (Grades K-9)



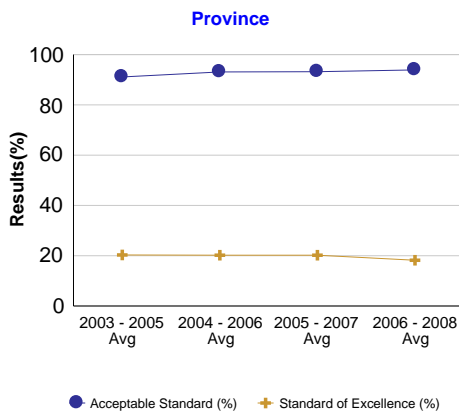
PAT Results By Course - 3 Year Rolling Average

Province: Alberta

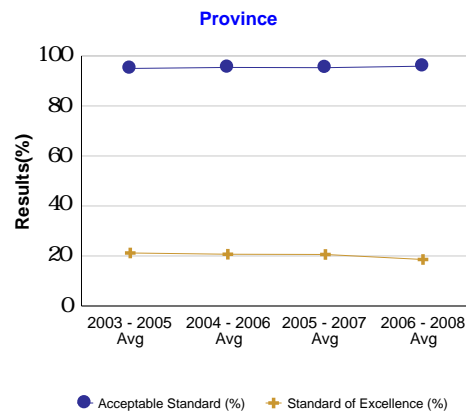
Français 6

		Province			
		2003 - 2005 Avg	2004 - 2006 Avg	2005 - 2007 Avg	2006 - 2008 Avg
Participation	Students Enrolled	303	326	367	406
	Students Writing	291	318	358	398
	Students Writing (%)	95.9	97.6	97.7	98.0
Results Based on Number Enrolled	Acceptable Standard (%)	91.1	93.1	93.2	93.9
	Standard of Excellence (%)	20.3	20.2	20.2	18.2
	Below Acceptable Standard (%)	4.8	4.5	4.6	4.1
Results Based on Number Writing	Acceptable Standard (%)	95.0	95.4	95.3	95.9
	Standard of Excellence (%)	21.2	20.7	20.6	18.6
	Below Acceptable Standard (%)	5.0	4.6	4.7	4.1

Results Based on Number Enrolled



Results Based on Number Writing



Note: Data values have been suppressed where the number of students is less than 6. Suppression is marked with an asterisk (*).

Grade 9 Science results are for information only. Grade 9 Science is not currently included in the PAT results aggregation measure.

Student Learning Achievement (Grades K-9)



PAT Results By Course

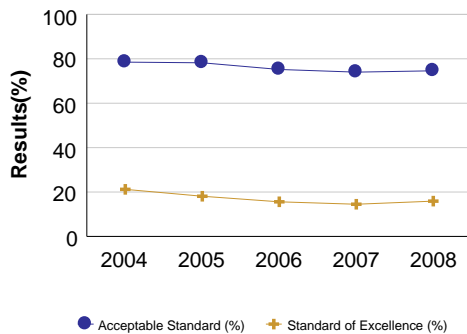
Province: Alberta

Mathematics 6

		Province				
		2004	2005	2006	2007	2008
Participation	Students Enrolled	44,742	43,668	44,112	44,856	44,012
	Students Writing	40,760	39,708	39,972	40,355	39,592
	Students Writing (%)	91.1	90.9	90.6	90.0	90.0
Results Based on Number Enrolled	Acceptable Standard (%)	78.5	78.2	75.2	74.0	74.6
	Standard of Excellence (%)	21.2	18.1	15.6	14.5	15.9
	Below Acceptable Standard (%)	12.6	12.7	15.4	15.9	15.3
Results Based on Number Writing	Acceptable Standard (%)	86.2	86.1	83.0	82.3	83.0
	Standard of Excellence (%)	23.3	20.0	17.2	16.1	17.7
	Below Acceptable Standard (%)	13.8	13.9	17.0	17.7	17.0

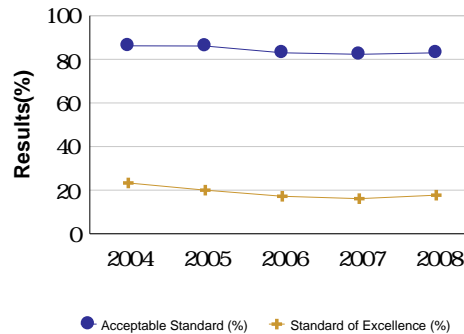
Results Based on Number Enrolled

Province



Results Based on Number Writing

Province



Note: Data values have been suppressed where the number of students is less than 6. Suppression is marked with an asterisk (*).
Grade 9 Science results are for information only. Grade 9 Science is not currently included in the PAT results aggregation measure.

Student Learning Achievement (Grades K-9)



PAT Results By Course - 3 Year Rolling Average

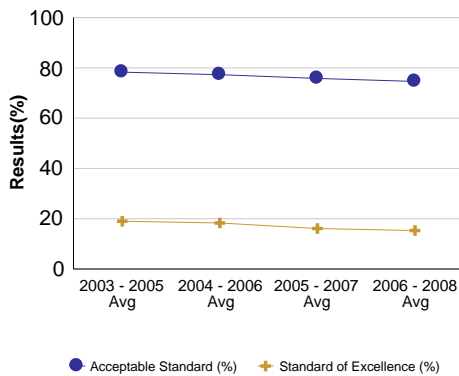
Province: Alberta

Mathematics 6

		Province			
		2003 - 2005 Avg	2004 - 2006 Avg	2005 - 2007 Avg	2006 - 2008 Avg
Participation	Students Enrolled	44,454	44,174	44,212	44,327
	Students Writing	40,518	40,147	40,012	39,973
	Students Writing (%)	91.1	90.9	90.5	90.2
Results Based on Number Enrolled	Acceptable Standard (%)	78.3	77.3	75.8	74.6
	Standard of Excellence (%)	19.0	18.3	16.1	15.3
	Below Acceptable Standard (%)	12.8	13.5	14.7	15.5
Results Based on Number Writing	Acceptable Standard (%)	86.0	85.1	83.8	82.8
	Standard of Excellence (%)	20.9	20.2	17.7	17.0
	Below Acceptable Standard (%)	14.1	14.9	16.2	17.2

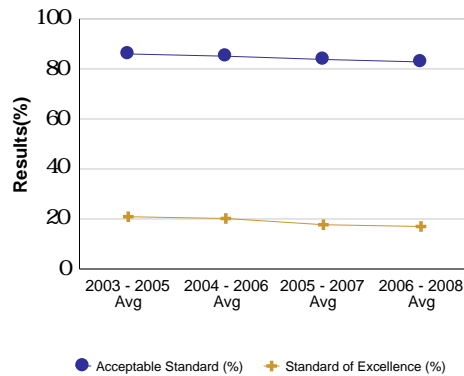
Results Based on Number Enrolled

Province



Results Based on Number Writing

Province



Note: Data values have been suppressed where the number of students is less than 6. Suppression is marked with an asterisk (*).

Grade 9 Science results are for information only. Grade 9 Science is not currently included in the PAT results aggregation measure.

Student Learning Achievement (Grades K-9)



PAT Results By Course

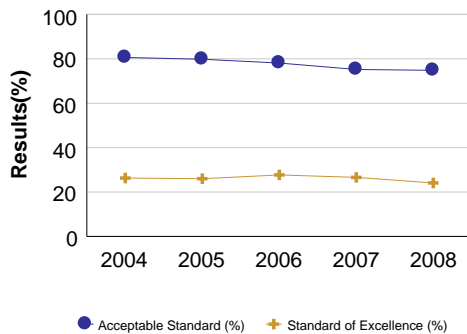
Province: Alberta

Science 6

		Province				
		2004	2005	2006	2007	2008
Participation	Students Enrolled	44,650	43,596	44,007	44,742	43,878
	Students Writing	40,725	39,512	39,603	39,866	39,043
	Students Writing (%)	91.2	90.6	90.0	89.1	89.0
Results Based on Number Enrolled	Acceptable Standard (%)	80.6	79.8	78.1	75.2	74.8
	Standard of Excellence (%)	26.3	26.0	27.7	26.6	24.1
	Below Acceptable Standard (%)	10.7	10.8	11.9	13.9	14.2
Results Based on Number Writing	Acceptable Standard (%)	88.3	88.0	86.8	84.4	84.1
	Standard of Excellence (%)	28.8	28.6	30.8	29.8	27.1
	Below Acceptable Standard (%)	11.7	12.0	13.2	15.6	15.9

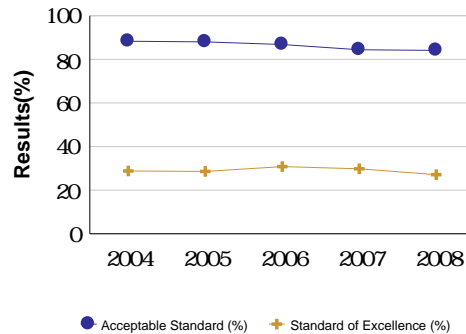
Results Based on Number Enrolled

Province



Results Based on Number Writing

Province



Note: Data values have been suppressed where the number of students is less than 6. Suppression is marked with an asterisk (*).

Grade 9 Science results are for information only. Grade 9 Science is not currently included in the PAT results aggregation measure.

Student Learning Achievement (Grades K-9)



PAT Results By Course - 3 Year Rolling Average

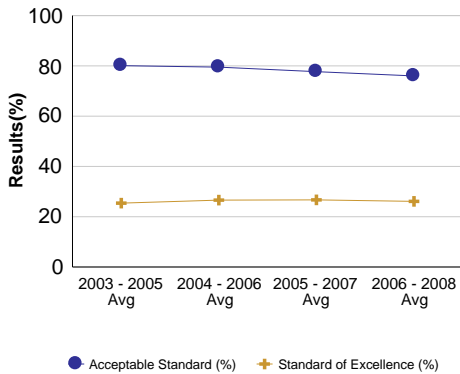
Province: Alberta

Science 6

		Province			
		2003 - 2005 Avg	2004 - 2006 Avg	2005 - 2007 Avg	2006 - 2008 Avg
Participation	Students Enrolled	44,371	44,084	44,115	44,209
	Students Writing	40,350	39,947	39,660	39,504
	Students Writing (%)	90.9	90.6	89.9	89.4
Results Based on Number Enrolled	Acceptable Standard (%)	80.1	79.5	77.7	76.0
	Standard of Excellence (%)	25.4	26.6	26.7	26.1
	Below Acceptable Standard (%)	10.8	11.1	12.2	13.3
Results Based on Number Writing	Acceptable Standard (%)	88.1	87.7	86.4	85.1
	Standard of Excellence (%)	28.0	29.4	29.7	29.2
	Below Acceptable Standard (%)	11.9	12.3	13.6	14.9

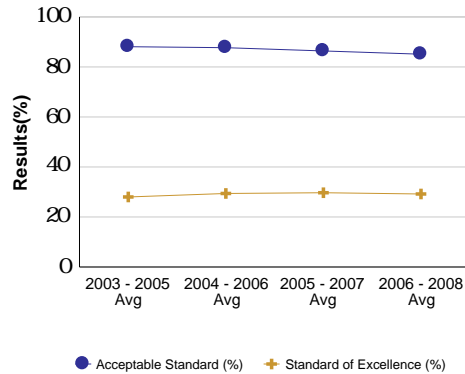
Results Based on Number Enrolled

Province



Results Based on Number Writing

Province



Note: Data values have been suppressed where the number of students is less than 6. Suppression is marked with an asterisk (*).

Grade 9 Science results are for information only. Grade 9 Science is not currently included in the PAT results aggregation measure.

Student Learning Achievement (Grades K-9)



PAT Results By Course

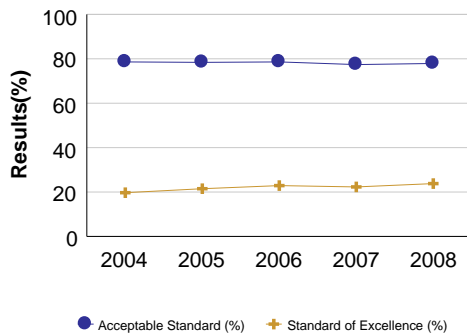
Province: Alberta

Social Studies 6

		Province				
		2004	2005	2006	2007	2008
Participation	Students Enrolled	44,642	43,511	44,021	44,393	43,460
	Students Writing	40,605	39,176	39,854	39,770	38,748
	Students Writing (%)	91.0	90.0	90.5	89.6	89.2
Results Based on Number Enrolled	Acceptable Standard (%)	78.6	78.4	78.6	77.4	77.9
	Standard of Excellence (%)	19.7	21.5	22.9	22.3	23.8
	Below Acceptable Standard (%)	12.4	11.7	12.0	12.2	11.3
Results Based on Number Writing	Acceptable Standard (%)	86.4	87.0	86.8	86.4	87.3
	Standard of Excellence (%)	21.7	23.9	25.3	24.9	26.7
	Below Acceptable Standard (%)	13.6	13.0	13.2	13.6	12.7

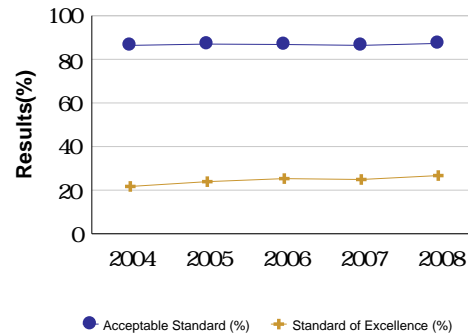
Results Based on Number Enrolled

Province



Results Based on Number Writing

Province



Note: Data values have been suppressed where the number of students is less than 6. Suppression is marked with an asterisk (*).
Grade 9 Science results are for information only. Grade 9 Science is not currently included in the PAT results aggregation measure.

Student Learning Achievement (Grades K-9)



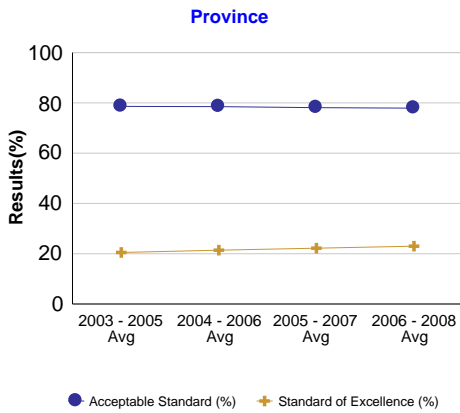
PAT Results By Course - 3 Year Rolling Average

Province: Alberta

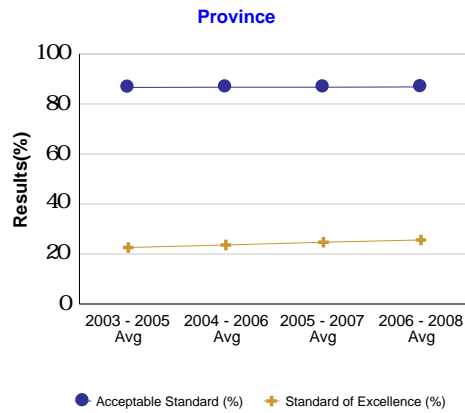
Social Studies 6

		Province			
		2003 - 2005 Avg	2004 - 2006 Avg	2005 - 2007 Avg	2006 - 2008 Avg
Participation	Students Enrolled	44,345	44,058	43,975	43,958
	Students Writing	40,261	39,878	39,600	39,457
	Students Writing (%)	90.8	90.5	90.1	89.8
Results Based on Number Enrolled	Acceptable Standard (%)	78.6	78.5	78.1	77.9
	Standard of Excellence (%)	20.5	21.4	22.2	23.0
	Below Acceptable Standard (%)	12.2	12.0	11.9	11.8
Results Based on Number Writing	Acceptable Standard (%)	86.6	86.7	86.7	86.8
	Standard of Excellence (%)	22.6	23.6	24.7	25.6
	Below Acceptable Standard (%)	13.4	13.3	13.3	13.2

Results Based on Number Enrolled



Results Based on Number Writing



Note: Data values have been suppressed where the number of students is less than 6. Suppression is marked with an asterisk (*).

Grade 9 Science results are for information only. Grade 9 Science is not currently included in the PAT results aggregation measure.

Student Learning Achievement (Grades K-9)



PAT Results By Course

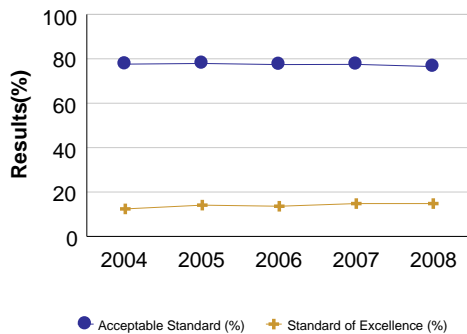
Province: Alberta

English Language Arts 9

		Province				
		2004	2005	2006	2007	2008
Participation	Students Enrolled	45,237	45,703	44,981	45,113	43,962
	Students Writing	39,492	39,949	39,465	39,668	38,576
	Students Writing (%)	87.3	87.4	87.7	87.9	87.7
Results Based on Number Enrolled	Acceptable Standard (%)	77.6	77.9	77.4	77.5	76.5
	Standard of Excellence (%)	12.4	14.1	13.6	14.8	14.8
	Below Acceptable Standard (%)	9.7	9.5	10.4	10.4	11.2
Results Based on Number Writing	Acceptable Standard (%)	88.9	89.2	88.2	88.2	87.2
	Standard of Excellence (%)	14.2	16.1	15.5	16.8	16.8
	Below Acceptable Standard (%)	11.1	10.8	11.8	11.8	12.8

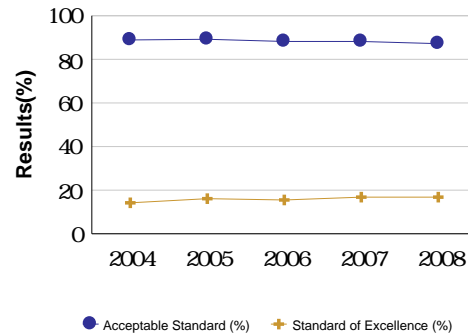
Results Based on Number Enrolled

Province



Results Based on Number Writing

Province



Note: Data values have been suppressed where the number of students is less than 6. Suppression is marked with an asterisk (*). Grade 9 Science results are for information only. Grade 9 Science is not currently included in the PAT results aggregation measure.

Student Learning Achievement (Grades K-9)



PAT Results By Course - 3 Year Rolling Average

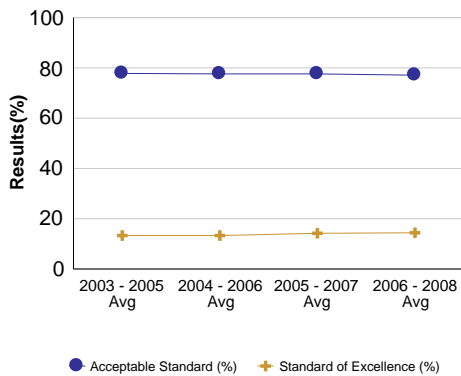
Province: Alberta

English Language Arts 9

		Province			
		2003 - 2005 Avg	2004 - 2006 Avg	2005 - 2007 Avg	2006 - 2008 Avg
Participation	Students Enrolled	45,206	45,307	45,266	44,685
	Students Writing	39,497	39,635	39,694	39,236
	Students Writing (%)	87.4	87.5	87.7	87.8
Results Based on Number Enrolled	Acceptable Standard (%)	77.8	77.6	77.6	77.1
	Standard of Excellence (%)	13.3	13.3	14.2	14.4
	Below Acceptable Standard (%)	9.5	9.9	10.1	10.7
Results Based on Number Writing	Acceptable Standard (%)	89.1	88.7	88.5	87.9
	Standard of Excellence (%)	15.2	15.3	16.1	16.4
	Below Acceptable Standard (%)	10.9	11.3	11.5	12.1

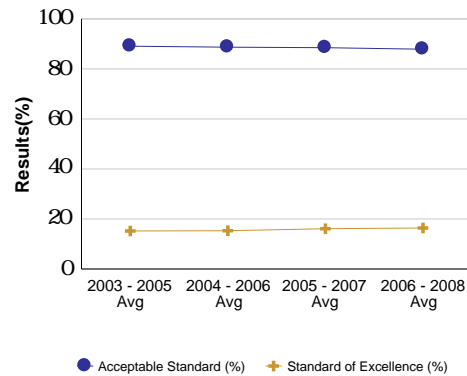
Results Based on Number Enrolled

Province



Results Based on Number Writing

Province



Note: Data values have been suppressed where the number of students is less than 6. Suppression is marked with an asterisk (*).

Grade 9 Science results are for information only. Grade 9 Science is not currently included in the PAT results aggregation measure.

Student Learning Achievement (Grades K-9)



PAT Results By Course

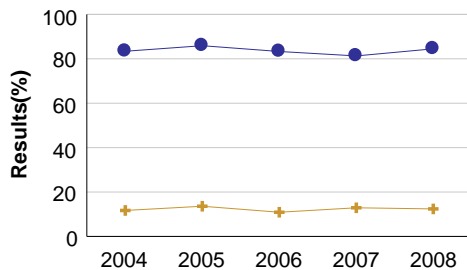
Province: Alberta

French Language Arts 9

		Province				
		2004	2005	2006	2007	2008
Participation	Students Enrolled	2,183	2,100	2,137	2,415	2,307
	Students Writing	2,073	2,040	2,050	2,262	2,234
	Students Writing (%)	95.0	97.1	95.9	93.7	96.8
Results Based on Number Enrolled	Acceptable Standard (%)	83.4	85.9	83.3	81.3	84.5
	Standard of Excellence (%)	11.7	13.6	10.9	12.9	12.4
	Below Acceptable Standard (%)	11.5	11.3	12.6	12.4	12.4
Results Based on Number Writing	Acceptable Standard (%)	87.8	88.4	86.9	86.8	87.2
	Standard of Excellence (%)	12.3	14.0	11.4	13.8	12.8
	Below Acceptable Standard (%)	12.2	11.6	13.1	13.2	12.8

Results Based on Number Enrolled

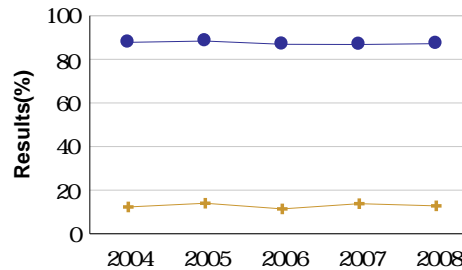
Province



● Acceptable Standard (%) + Standard of Excellence (%)

Results Based on Number Writing

Province



● Acceptable Standard (%) + Standard of Excellence (%)

Note: Data values have been suppressed where the number of students is less than 6. Suppression is marked with an asterisk (*).
Grade 9 Science results are for information only. Grade 9 Science is not currently included in the PAT results aggregation measure.

Student Learning Achievement (Grades K-9)



PAT Results By Course - 3 Year Rolling Average

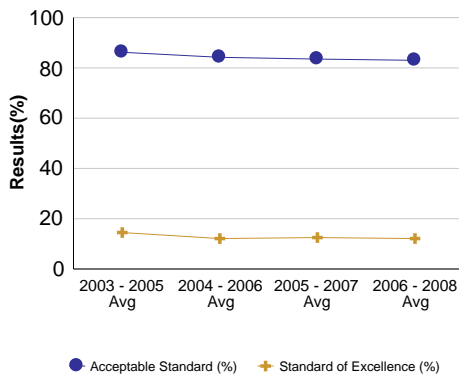
Province: Alberta

French Language Arts 9

		Province			
		2003 - 2005 Avg	2004 - 2006 Avg	2005 - 2007 Avg	2006 - 2008 Avg
Participation	Students Enrolled	2,118	2,140	2,217	2,286
	Students Writing	2,039	2,054	2,117	2,182
	Students Writing (%)	96.3	96.0	95.6	95.5
Results Based on Number Enrolled	Acceptable Standard (%)	86.2	84.2	83.5	83.0
	Standard of Excellence (%)	14.5	12.1	12.5	12.1
	Below Acceptable Standard (%)	10.1	11.8	12.1	12.4
Results Based on Number Writing	Acceptable Standard (%)	89.5	87.7	87.3	87.0
	Standard of Excellence (%)	15.0	12.6	13.1	12.6
	Below Acceptable Standard (%)	10.5	12.3	12.7	13.0

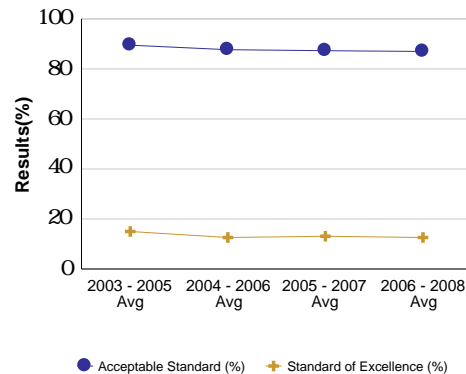
Results Based on Number Enrolled

Province



Results Based on Number Writing

Province



Note: Data values have been suppressed where the number of students is less than 6. Suppression is marked with an asterisk (*).

Grade 9 Science results are for information only. Grade 9 Science is not currently included in the PAT results aggregation measure.

Student Learning Achievement (Grades K-9)



PAT Results By Course

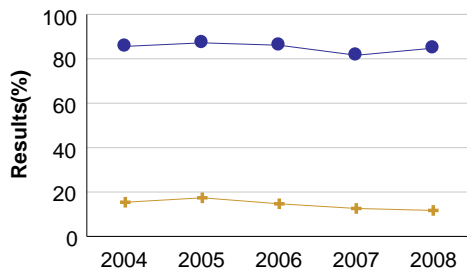
Province: Alberta

Français 9

		Province				
		2004	2005	2006	2007	2008
Participation	Students Enrolled	208	235	245	293	316
	Students Writing	202	229	240	284	309
	Students Writing (%)	97.1	97.4	98.0	96.9	97.8
Results Based on Number Enrolled	Acceptable Standard (%)	85.6	87.2	86.1	81.6	84.8
	Standard of Excellence (%)	15.4	17.4	14.7	12.6	11.7
	Below Acceptable Standard (%)	11.5	10.2	11.8	15.4	13.0
Results Based on Number Writing	Acceptable Standard (%)	88.1	89.5	87.9	84.2	86.7
	Standard of Excellence (%)	15.8	17.9	15.0	13.0	12.0
	Below Acceptable Standard (%)	11.9	10.5	12.1	15.8	13.3

Results Based on Number Enrolled

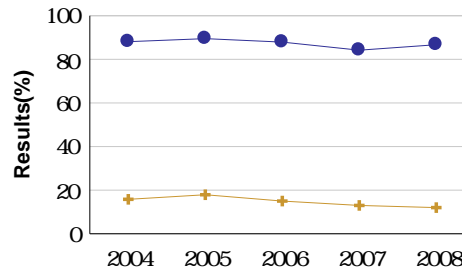
Province



● Acceptable Standard (%) + Standard of Excellence (%)

Results Based on Number Writing

Province



● Acceptable Standard (%) + Standard of Excellence (%)

Note: Data values have been suppressed where the number of students is less than 6. Suppression is marked with an asterisk (*).

Grade 9 Science results are for information only. Grade 9 Science is not currently included in the PAT results aggregation measure.

Student Learning Achievement (Grades K-9)



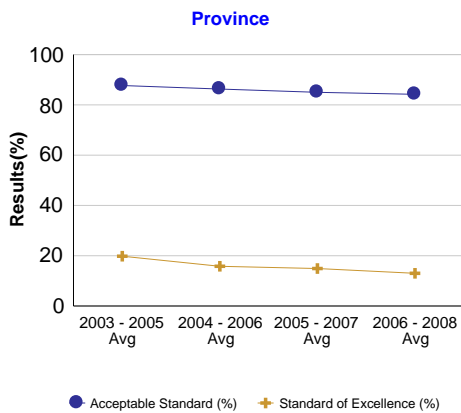
PAT Results By Course - 3 Year Rolling Average

Province: Alberta

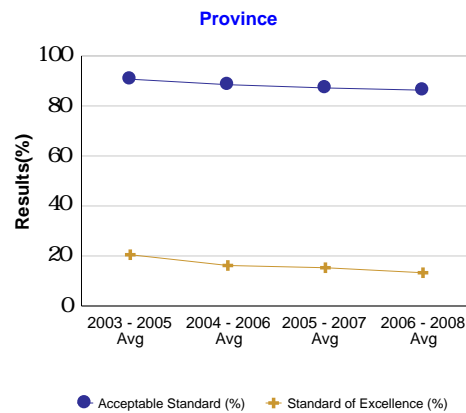
Français 9

		Province			
		2003 - 2005 Avg	2004 - 2006 Avg	2005 - 2007 Avg	2006 - 2008 Avg
Participation	Students Enrolled	217	229	258	285
	Students Writing	210	224	251	278
	Students Writing (%)	96.7	97.5	97.4	97.6
Results Based on Number Enrolled	Acceptable Standard (%)	87.7	86.3	85.0	84.2
	Standard of Excellence (%)	19.8	15.8	14.9	13.0
	Below Acceptable Standard (%)	9.0	11.2	12.5	13.4
Results Based on Number Writing	Acceptable Standard (%)	90.7	88.5	87.2	86.3
	Standard of Excellence (%)	20.5	16.2	15.3	13.3
	Below Acceptable Standard (%)	9.3	11.5	12.8	13.7

Results Based on Number Enrolled



Results Based on Number Writing



Note: Data values have been suppressed where the number of students is less than 6. Suppression is marked with an asterisk (*).

Grade 9 Science results are for information only. Grade 9 Science is not currently included in the PAT results aggregation measure.

Student Learning Achievement (Grades K-9)



PAT Results By Course

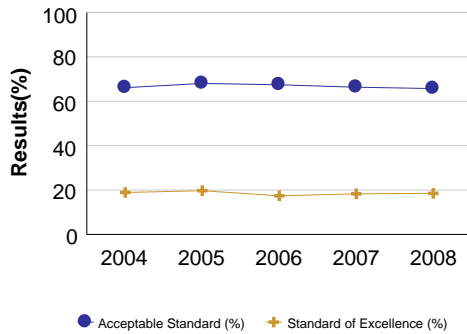
Province: Alberta

Mathematics 9

		Province				
		2004	2005	2006	2007	2008
Participation	Students Enrolled	45,162	45,533	44,743	44,742	43,465
	Students Writing	39,603	39,871	39,055	39,387	38,269
	Students Writing (%)	87.7	87.6	87.3	88.0	88.0
Results Based on Number Enrolled	Acceptable Standard (%)	66.1	68.0	67.4	66.3	65.7
	Standard of Excellence (%)	18.9	19.7	17.4	18.3	18.5
	Below Acceptable Standard (%)	21.5	19.5	19.9	21.7	22.4
Results Based on Number Writing	Acceptable Standard (%)	75.4	77.7	77.2	75.3	74.6
	Standard of Excellence (%)	21.5	22.5	20.0	20.7	21.0
	Below Acceptable Standard (%)	24.6	22.3	22.8	24.7	25.4

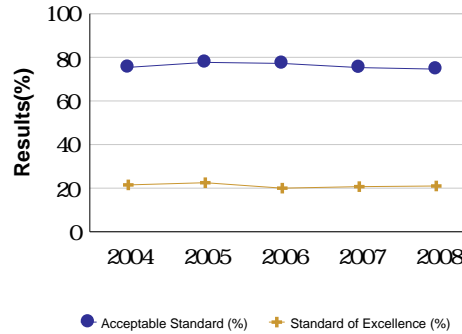
Results Based on Number Enrolled

Province



Results Based on Number Writing

Province



Note: Data values have been suppressed where the number of students is less than 6. Suppression is marked with an asterisk (*).

Grade 9 Science results are for information only. Grade 9 Science is not currently included in the PAT results aggregation measure.

Student Learning Achievement (Grades K-9)



PAT Results By Course - 3 Year Rolling Average

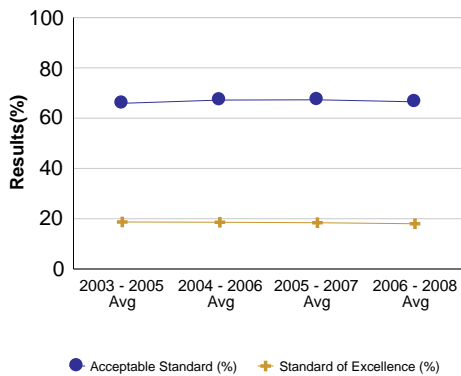
Province: Alberta

Mathematics 9

		Province			
		2003 - 2005 Avg	2004 - 2006 Avg	2005 - 2007 Avg	2006 - 2008 Avg
Participation	Students Enrolled	45,078	45,146	45,006	44,317
	Students Writing	39,460	39,510	39,438	38,904
	Students Writing (%)	87.5	87.5	87.6	87.8
Results Based on Number Enrolled	Acceptable Standard (%)	65.9	67.2	67.3	66.5
	Standard of Excellence (%)	18.7	18.6	18.4	18.0
	Below Acceptable Standard (%)	21.7	20.3	20.4	21.3
Results Based on Number Writing	Acceptable Standard (%)	75.3	76.8	76.8	75.7
	Standard of Excellence (%)	21.3	21.3	21.0	20.6
	Below Acceptable Standard (%)	24.7	23.2	23.2	24.3

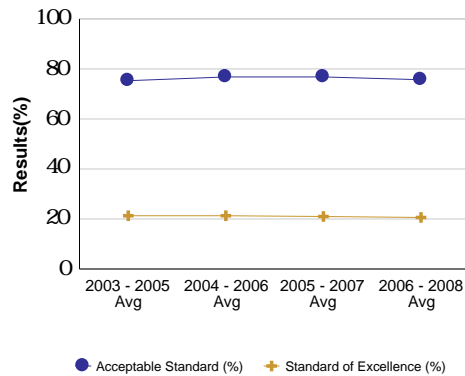
Results Based on Number Enrolled

Province



Results Based on Number Writing

Province



Note: Data values have been suppressed where the number of students is less than 6. Suppression is marked with an asterisk (*).

Grade 9 Science results are for information only. Grade 9 Science is not currently included in the PAT results aggregation measure.

Student Learning Achievement (Grades K-9)



PAT Results By Course

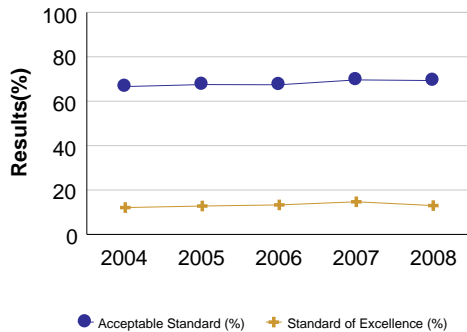
Province: Alberta

Science 9

		Province				
		2004	2005	2006	2007	2008
Participation	Students Enrolled	44,939	45,669	44,850	44,939	43,727
	Students Writing	39,826	40,295	39,512	39,918	38,914
	Students Writing (%)	88.6	88.2	88.1	88.8	89.0
Results Based on Number Enrolled	Acceptable Standard (%)	66.6	67.5	67.4	69.6	69.3
	Standard of Excellence (%)	12.1	12.8	13.3	14.7	13.0
	Below Acceptable Standard (%)	22.0	20.7	20.7	19.2	19.7
Results Based on Number Writing	Acceptable Standard (%)	75.2	76.5	76.5	78.4	77.9
	Standard of Excellence (%)	13.6	14.5	15.1	16.5	14.7
	Below Acceptable Standard (%)	24.8	23.5	23.5	21.6	22.1

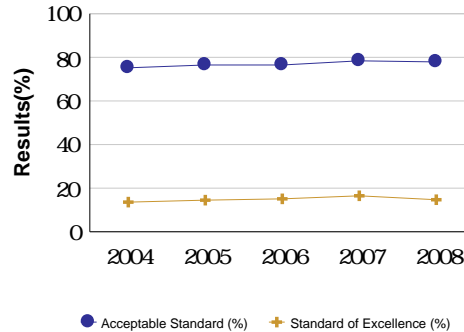
Results Based on Number Enrolled

Province



Results Based on Number Writing

Province



Note: Data values have been suppressed where the number of students is less than 6. Suppression is marked with an asterisk (*). Grade 9 Science results are for information only. Grade 9 Science is not currently included in the PAT results aggregation measure.

Student Learning Achievement (Grades K-9)



PAT Results By Course - 3 Year Rolling Average

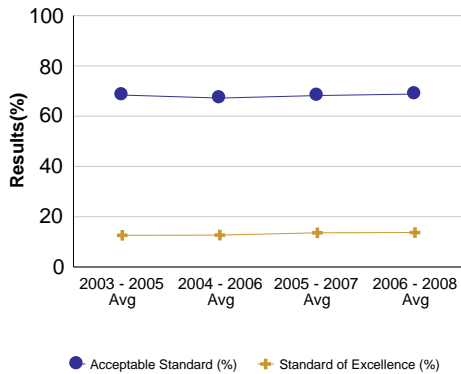
Province: Alberta

Science 9

		Province			
		2003 - 2005 Avg	2004 - 2006 Avg	2005 - 2007 Avg	2006 - 2008 Avg
Participation	Students Enrolled	39,774	45,153	45,153	44,505
	Students Writing	34,930	39,878	39,908	39,448
	Students Writing (%)	87.6	88.3	88.4	88.6
Results Based on Number Enrolled	Acceptable Standard (%)	68.4	67.2	68.2	68.8
	Standard of Excellence (%)	12.6	12.7	13.6	13.7
	Below Acceptable Standard (%)	19.2	21.2	20.2	19.9
Results Based on Number Writing	Acceptable Standard (%)	78.1	76.0	77.1	77.6
	Standard of Excellence (%)	14.4	14.4	15.4	15.4
	Below Acceptable Standard (%)	21.9	24.0	22.9	22.4

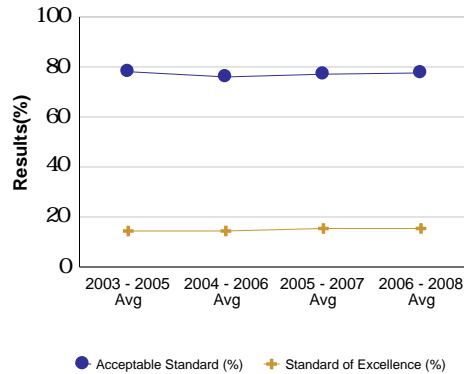
Results Based on Number Enrolled

Province



Results Based on Number Writing

Province



Note: Data values have been suppressed where the number of students is less than 6. Suppression is marked with an asterisk (*).

Grade 9 Science results are for information only. Grade 9 Science is not currently included in the PAT results aggregation measure.

Student Learning Achievement (Grades K-9)



PAT Results By Course

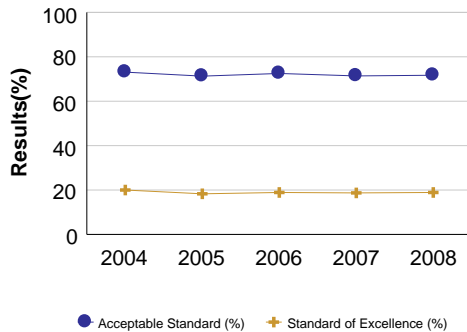
Province: Alberta

Social Studies 9

		Province				
		2004	2005	2006	2007	2008
Participation	Students Enrolled	45,209	45,571	44,843	44,536	43,395
	Students Writing	40,039	40,031	39,682	39,384	38,574
	Students Writing (%)	88.6	87.8	88.5	88.4	88.9
Results Based on Number Enrolled	Acceptable Standard (%)	73.1	71.3	72.5	71.4	71.7
	Standard of Excellence (%)	20.0	18.3	18.9	18.7	18.9
	Below Acceptable Standard (%)	15.4	16.6	16.0	17.1	17.2
Results Based on Number Writing	Acceptable Standard (%)	82.6	81.1	82.0	80.7	80.7
	Standard of Excellence (%)	22.6	20.8	21.3	21.2	21.3
	Below Acceptable Standard (%)	17.4	18.9	18.0	19.3	19.3

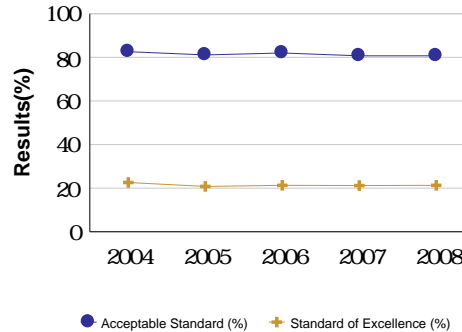
Results Based on Number Enrolled

Province



Results Based on Number Writing

Province



Note: Data values have been suppressed where the number of students is less than 6. Suppression is marked with an asterisk (*).
Grade 9 Science results are for information only. Grade 9 Science is not currently included in the PAT results aggregation measure.

Student Learning Achievement (Grades K-9)



PAT Results By Course - 3 Year Rolling Average

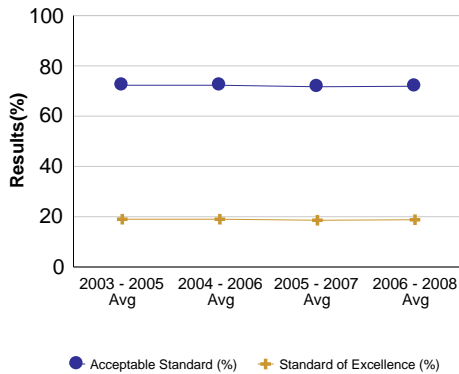
Province: Alberta

Social Studies 9

		Province			
		2003 - 2005 Avg	2004 - 2006 Avg	2005 - 2007 Avg	2006 - 2008 Avg
Participation	Students Enrolled	45,126	45,208	44,983	44,258
	Students Writing	39,730	39,917	39,699	39,213
	Students Writing (%)	88.0	88.3	88.3	88.6
Results Based on Number Enrolled	Acceptable Standard (%)	72.3	72.3	71.7	71.9
	Standard of Excellence (%)	19.0	19.0	18.6	18.8
	Below Acceptable Standard (%)	15.7	16.0	16.5	16.7
Results Based on Number Writing	Acceptable Standard (%)	82.2	81.9	81.3	81.1
	Standard of Excellence (%)	21.6	21.6	21.1	21.3
	Below Acceptable Standard (%)	17.8	18.1	18.7	18.9

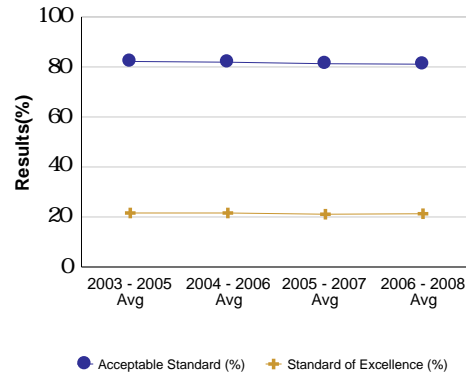
Results Based on Number Enrolled

Province



Results Based on Number Writing

Province



Note: Data values have been suppressed where the number of students is less than 6. Suppression is marked with an asterisk (*).

Grade 9 Science results are for information only. Grade 9 Science is not currently included in the PAT results aggregation measure.